

For Research Use Only

NELF Recombinant antibody

Catalog Number: 83490-2-RR



Basic Information

| | | |
|---|--|---|
| Catalog Number: 83490-2-RR | GenBank Accession Number: BC016862 | Purification Method: Protein A purification |
| Size: 1000 µg/ml | GeneID (NCBI): 26012 | CloneNo.: 240482G1 |
| Source: Rabbit | UNIPROT ID: Q6X4W1 | Recommended Dilutions: WB 1:5000-1:50000 |
| Isotype: IgG | Full Name: nasal embryonic LHRH factor | |
| Immunogen Catalog Number: AG34902 | Calculated MW: 507 aa, 56 kDa | |
| | Observed MW: 54-60 kDa | |

Applications

| | |
|--|---|
| Tested Applications: WB, ELISA | Positive Controls: WB : COLO 320 cells, HeLa cells, HepG2 cells |
| Species Specificity: Human | |

Background Information

NSMF, also named as NELF (Nasal embryonic LHRH factor), couples NMDA-sensitive glutamate receptor signaling to the nucleus and triggers long-lasting changes in the cytoarchitecture of dendrites and spine synapse processes. NELF plays a major role in promoter-proximal pausing, a widespread phenomenon during early transcription elongation.

Storage

Storage:
Store at -20°C. Stable for one year after shipment.
Storage Buffer:
PBS with 0.02% sodium azide and 50% glycerol pH 7.3.
Aliquoting is unnecessary for -20°C storage

For technical support and original validation data for this product please contact:

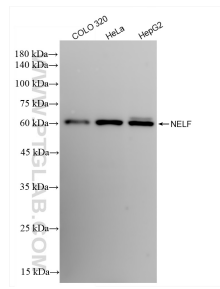
T: 4006900926

E: Proteintech-CN@ptglab.com

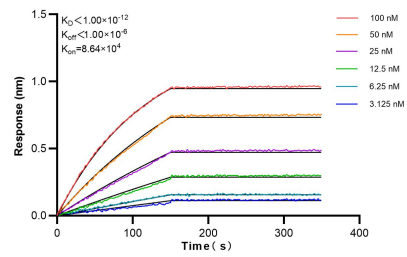
W: ptgcn.com

This product is exclusively available under Proteintech Group brand and is not available to purchase from any other manufacturer.

Selected Validation Data



Various lysates were subjected to SDS PAGE followed by western blot with 83490-2-RR (NELF antibody) at dilution of 1:10000 incubated at room temperature for 1.5 hours.



Biolayer interferometry (BLI) kinetic assays of 83490-2-RR against Human NELF were performed. The affinity constant is below 1 pM.