

For Research Use Only

# HTRA2 Recombinant antibody

Catalog Number: 83492-7-RR



## Basic Information

<b>Catalog Number:</b> 83492-7-RR	<b>GenBank Accession Number:</b> BC000096	<b>Purification Method:</b> Protein A purification
<b>Size:</b> 1000 µg/ml	<b>GeneID (NCBI):</b> 27429	<b>CloneNo.:</b> 240496D1
<b>Source:</b> Rabbit	<b>UNIPROT ID:</b> O43464	<b>Recommended Dilutions:</b> WB 1:2000-1:10000 IF 1:125-1:500
<b>Isotype:</b> IgG	<b>Full Name:</b> HtrA serine peptidase 2	
<b>Immunogen Catalog Number:</b> AG8455	<b>Calculated MW:</b> 49 kDa	
	<b>Observed MW:</b> 36 kDa	

## Applications

<b>Tested Applications:</b> WB, IF/ICC, ELISA	<b>Positive Controls:</b>
<b>Species Specificity:</b> Human	<b>WB :</b> HEK-293 cells, HeLa cells, MCF-7 cells, Raji cells, Jurkat cells, human heart tissue
	<b>IF :</b> HepG2 cells,

## Background Information

HTRA2(High temperature requirement protein A2) is also named as OMI, PRSS25 and belongs to the peptidase S1B family. HTRA2 normally exists in the mitochondria, can cause MMP3 activation in the cytosol under a cell stress condition, which can ultimately lead to demise of dopaminergic neuronal cells(PMID: 22265821). It inhibits mitochondrial superoxide generation, stabilizes mitochondrial membrane potential, and prevents apoptosis at baseline and in response to extracellular inducers of mitochondrial stress(PMID: 18772386). This protein has 4 isoforms produced by alternative splicing.

## Storage

**Storage:**  
Store at -20°C. Stable for one year after shipment.  
**Storage Buffer:**  
PBS with 0.02% sodium azide and 50% glycerol pH 7.3.  
**Aliquoting is unnecessary for -20°C storage**

For technical support and original validation data for this product please contact:

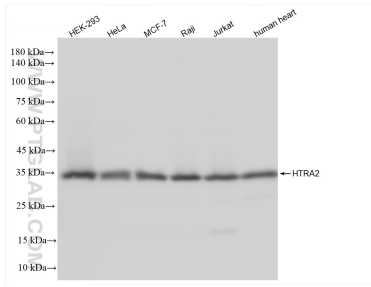
T: 4006900926

E: [Proteintech-CN@ptglab.com](mailto:Proteintech-CN@ptglab.com)

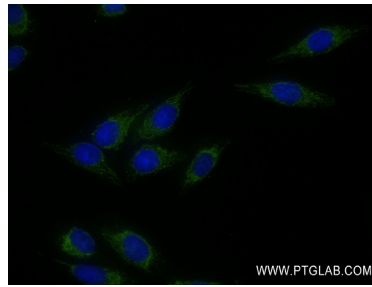
W: [ptgcn.com](http://ptgcn.com)

**This product is exclusively available under Proteintech Group brand and is not available to purchase from any other manufacturer.**

## Selected Validation Data



Various lysates were subjected to SDS PAGE followed by western blot with 83492-7-RR (HTRA2 antibody) at dilution of 1:5000 incubated at room temperature for 1.5 hours.



Immunofluorescent analysis of (4% PFA) fixed HepG2 cells using HTRA2 antibody (83492-7-RR, Clone: 240496D1) at dilution of 1:250 and CoraLite® 488-Conjugated AffiniPure Goat Anti-Mouse IgG(H+L) (SA00013-1).