

For Research Use Only

SLC7A2 Recombinant antibody, PBS Only (Capture)



Catalog Number: 83493-2-PBS

Basic Information

Catalog Number: 83493-2-PBS	GenBank Accession Number: BC104905	Purification Method: Protein A purification
Size: 1 mg/ml	GeneID (NCBI): 6542	CloneNo.: 240362E3
Source: Rabbit	UNIPROT ID: P52569	
Isotype: IgG	Full Name: solute carrier family 7 (cationic amino acid transporter, y+ system), member 2	
Immunogen Catalog Number: AG31207	Calculated MW: 698 aa, 76 kDa	

Applications

Tested Applications:
Indirect ELISA, Cytometric bead array

Species Specificity:
Human

Background Information

Storage

Storage:
Store at -80°C.
The product is shipped with ice packs. Upon receipt, store it immediately at -80°C

Storage Buffer:
PBS Only

For technical support and original validation data for this product please contact:

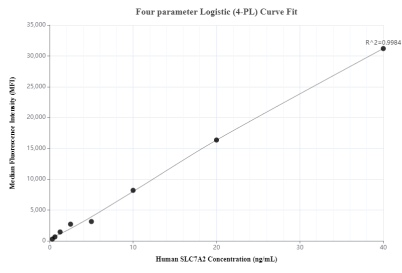
T: 4006900926

E: Proteintech-CN@ptglab.com

W: ptgcn.com

This product is exclusively available under Proteintech Group brand and is not available to purchase from any other manufacturer.

Selected Validation Data



Cytometric bead array standard curve of MP00492-1, SLC7A2 Recombinant Matched Antibody Pair, PBS Only. Capture antibody: 83493-2-PBS. Detection antibody: 83493-1-PBS. Standard: Ag31207. Range: 0.313-40 ng/mL