

For Research Use Only

NCAM2 Recombinant antibody, PBS Only (Capture)

Catalog Number: 83494-1-PBS



Basic Information

Catalog Number: 83494-1-PBS	GenBank Accession Number: BC052946	Purification Method: Protein A purification
Size: 1 mg/ml	GeneID (NCBI): 4685	CloneNo.: 240398B7
Source: Rabbit	UNIPROT ID: O15394	
Isotype: IgG	Full Name: neural cell adhesion molecule 2	
Immunogen Catalog Number: AG4821	Calculated MW: 93 kDa	

Applications

Tested Applications:
Cytometric bead array, Sandwich ELISA, Indirect ELISA, Sample test

Species Specificity:
human

Background Information

Storage

Storage:
Store at -80°C.
The product is shipped with ice packs. Upon receipt, store it immediately at -80°C

Storage Buffer:
PBS Only

For technical support and original validation data for this product please contact:

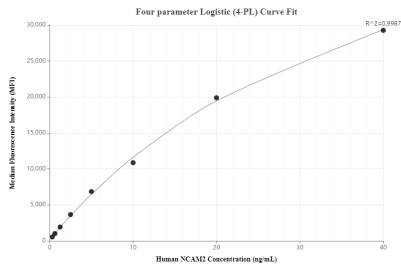
T: 4006900926

E: Proteintech-CN@ptglab.com

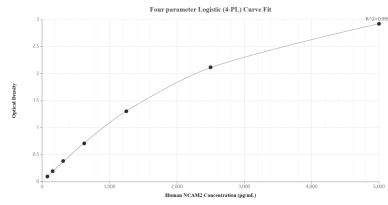
W: ptgcn.com

This product is exclusively available under Proteintech Group brand and is not available to purchase from any other manufacturer.

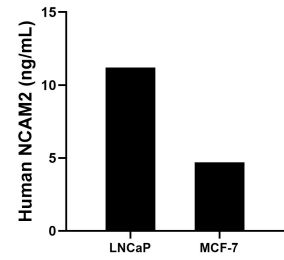
Selected Validation Data



Cytometric bead array standard curve of MP00493-3, NCAM2 Recombinant Matched Antibody Pair, PBS Only. Capture antibody: 83494-1-PBS. Detection antibody: 83494-4-PBS. Standard: Ag4821. Range: 0.313-40 ng/mL



Sandwich ELISA standard curve of MP00493-3, Human NCAM2 Recombinant Matched Antibody Pair - PBS only. 83494-1-PBS was coated to a plate as the capture antibody and incubated with serial dilutions of standard Ag4821. 83494-4-PBS was HRP conjugated as the detection antibody. Range: 78.1-5000 pg/mL



The mean NCAM2 concentration was determined to be 11.2 ng/mL in LNCaP cell extract based on a 3.0 mg/mL extract load and 4.7 ng/mL in MCF-7 cell extract based on a 4.3 mg/mL extract load.