

For Research Use Only

# NCAM2 Recombinant antibody, PBS Only (Detector)

Catalog Number:83494-4-PBS



## Basic Information

Catalog Number: 83494-4-PBS	GenBank Accession Number: BC052946	Purification Method: Protein A purification
Size: 1 mg/ml	GeneID (NCBI): 4685	CloneNo.: 240398D6
Source: Rabbit	UNIPROT ID: O15394	
Isotype: IgG	Full Name: neural cell adhesion molecule 2	
Immunogen Catalog Number: AG4821	Calculated MW: 93 kDa	

## Applications

**Tested Applications:**  
Cytometric bead array, Sandwich ELISA, Indirect ELISA, Sample test

**Species Specificity:**  
human

## Background Information

### Storage

**Storage:**  
Store at -80°C.  
**The product is shipped with ice packs. Upon receipt, store it immediately at -80°C**

**Storage Buffer:**  
PBS Only

For technical support and original validation data for this product please contact:

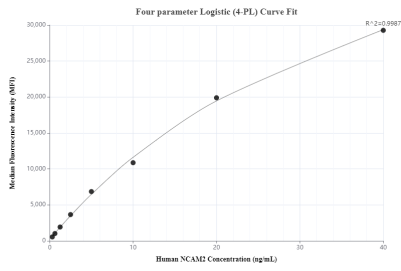
T: 4006900926

E: [Proteintech-CN@ptglab.com](mailto:Proteintech-CN@ptglab.com)

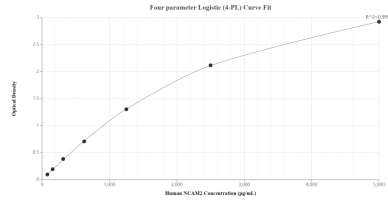
W: [ptgcn.com](http://ptgcn.com)

**This product is exclusively available under Proteintech Group brand and is not available to purchase from any other manufacturer.**

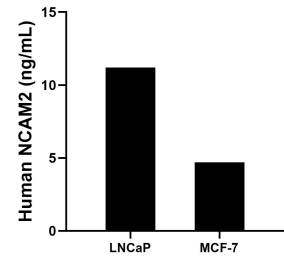
## Selected Validation Data



Cytometric bead array standard curve of MP00493-3, NCAM2 Recombinant Matched Antibody Pair, PBS Only. Capture antibody: 83494-1-PBS. Detection antibody: 83494-4-PBS. Standard: Ag4821. Range: 0.313-40 ng/mL



Sandwich ELISA standard curve of MP00493-3, Human NCAM2 Recombinant Matched Antibody Pair - PBS only. 83494-1-PBS was coated to a plate as the capture antibody and incubated with serial dilutions of standard Ag4821. 83494-4-PBS was HRP conjugated as the detection antibody. Range: 78.1-5000 pg/mL



The mean NCAM2 concentration was determined to be 11.2 ng/mL in LNCaP cell extract based on a 3.0 mg/mL extract load and 4.7 ng/mL in MCF-7 cell extract based on a 4.3 mg/mL extract load.