

For Research Use Only

LAMR1/RPSA Recombinant antibody, PBS Only (Capture)

Catalog Number: 83495-1-PBS



Basic Information

Catalog Number: 83495-1-PBS	GenBank Accession Number: BC050688	Purification Method: Protein A purification
Size: 1 mg/ml	GeneID (NCBI): 3921	CloneNo.: 240461C6
Source: Rabbit	UNIPROT ID: P08865	
Isotype: IgG	Full Name: ribosomal protein SA	
Immunogen Catalog Number: AG6033	Calculated MW: 33 kDa	

Applications

Tested Applications:
Cytometric bead array, Sandwich ELISA, Indirect ELISA,
Sample test

Species Specificity:
human

Background Information

Storage

Storage:
Store at -80°C.
The product is shipped with ice packs. Upon receipt, store it immediately at -80°C
Storage Buffer:
PBS Only

For technical support and original validation data for this product please contact:

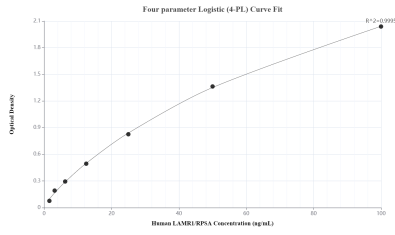
T: 4006900926

E: Proteintech-CN@ptglab.com

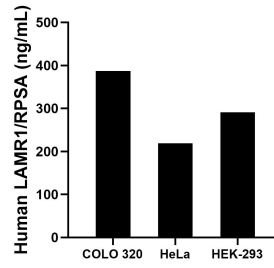
W: ptgcn.com

This product is exclusively available under Proteintech Group brand and is not available to purchase from any other manufacturer.

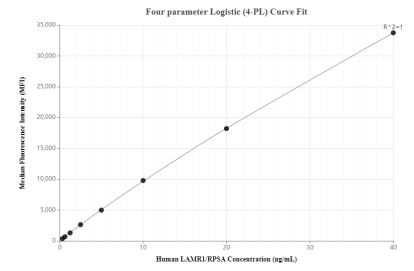
Selected Validation Data



Sandwich ELISA standard curve of MP00494-4, Human LAMR1/RPSA Recombinant Matched Antibody Pair - PBS only. 83495-1-PBS was coated to a plate as the capture antibody and incubated with serial dilutions of standard Ag6033. 83495-6-PBS was HRP conjugated as the detection antibody. Range: 1.56-100 ng/mL



The mean LAMR1/RPSA concentration was determined to be 387.00 ng/mL in COLO 320 cell extract based on a 2.00 mg/mL extract load, 218.85 ng/mL in HeLa cell extract based on a 1.20 mg/mL extract load and 291.26 ng/mL in HEK-293 cell extract based on a 1.20 mg/mL extract load.



Cytometric bead array standard curve of MP00494-1, LAMR1/RPSA Recombinant Matched Antibody Pair, PBS Only. Capture antibody: 83495-1-PBS. Detection antibody: 83495-4-PBS. Standard: Ag6033. Range: 0.313-40 ng/mL