

For Research Use Only

LAMR1/RPSA Recombinant antibody

Catalog Number:83495-7-RR



Basic Information

Catalog Number: 83495-7-RR	GenBank Accession Number: BC050688	Purification Method: Protein A purification
Size: 1000 ug/ml	GeneID (NCBI): 3921	CloneNo.: 240461G11
Source: Rabbit	UNIPROT ID: P08865	Recommended Dilutions: WB 1:5000-1:50000 IF/ICC 1:125-1:500
Isotype: IgG	Full Name: ribosomal protein SA	
Immunogen Catalog Number: AG6033	Calculated MW: 33 kDa	
	Observed MW: 40 kDa	

Applications

Tested Applications:
WB, IF/ICC, FC (Intra), ELISA

Species Specificity:
human, mouse

Positive Controls:
WB : HeLa cells, HepG2 cells, NIH/3T3 cells, A549 cells, COLO 320 cells, HEK-293 cells, Jurkat cells

IF/ICC : HepG2 cells,

Background Information

The ribosomal protein SA (RPSA), previously named 67 kD laminin receptor(67LR), 37 kD laminin receptor precursor (37LRP) and p40 ribosome-associated protein, is a multifunctional protein, that plays a role in a number of pathological processes, such as cancer and prion diseases. It is overexpressed in various cancer cell lines, and the level of the laminin receptor transcript is higher in colon carcinoma tissue and lung cancer cell line than their normal counterparts. This antibody is a rabbit polyclonal antibody raised against full length RPSA of human origin. This antibody is specific to RPSA (LAMR1).67LR derives from homo- or hetero- dimerization of a 37 kDa cytosolic precursor (37LRP)], most probably by fatty acid acylation. 37LRP is mostly found in the cytosol and nucleus [10] where it is involved in translational processes and maintenance of nuclear structures, respectively. 67LR is localized at the cell surface and it not only serves as a receptor for LM but also acts as a receptor for elastin, carbohydrates and the cellular prion protein.

Storage

Storage:
Store at -20°C. Stable for one year after shipment.

Storage Buffer:
PBS with 0.02% sodium azide and 50% glycerol pH 7.3.

Aliquoting is unnecessary for -20°C storage

For technical support and original validation data for this product please contact:

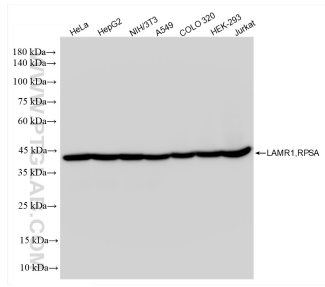
T: 4006900926

E: Proteintech-CN@ptglab.com

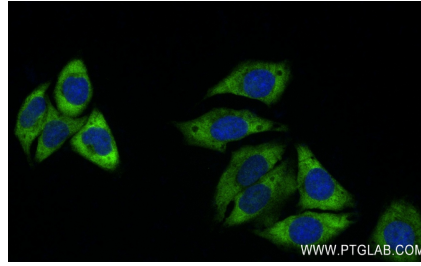
W: ptgcn.com

This product is exclusively available under Proteintech Group brand and is not available to purchase from any other manufacturer.

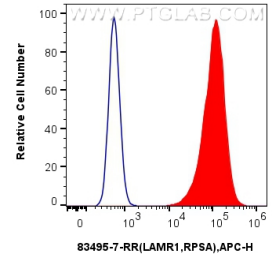
Selected Validation Data



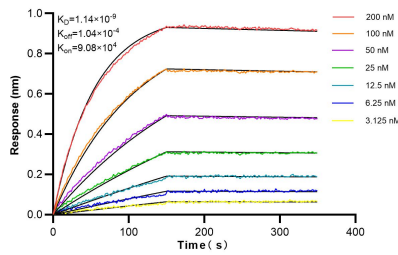
Various lysates were subjected to SDS PAGE followed by western blot with 83495-7-RR (LAMR1/RPSA antibody) at dilution of 1:10000 incubated at room temperature for 1.5 hours.



Immunofluorescent analysis of (4% PFA) fixed HepG2 cells using LAMR1/RPSA antibody (83495-7-RR, Clone: 240461G11) at dilution of 1:250 and Multi-rAb Coralite® Plus 488-Goat Anti-Rabbit Recombinant Secondary Antibody (H+L) (RGAR002).



1×10^6 MCF-7 cells were intracellularly stained with 0.25 μ g LAMR1/RPSA Recombinant antibody (83495-7-RR, Clone:240461G11) and APC-Conjugated AffiniPure Goat Anti-Rabbit IgG(H+L) (red), or 0.25 μ g Isotype Control (blue). Cells were fixed with 4% PFA and permeabilized with Flow Cytometry Perm Buffer (PF00011-C).



Biolayer interferometry (BLI) kinetic assays of 83495-7-RR against Human LAMR1,RPSA were performed. The affinity constant is 1.14 nM.