

For Research Use Only

# MDC1 Recombinant antibody, PBS Only (Detector)



Catalog Number: 83496-1-PBS

## Basic Information

Catalog Number: 83496-1-PBS	GenBank Accession Number: BC152556	Purification Method: Protein A purification
Size: 1 mg/ml	GeneID (NCBI): 9656	CloneNo.: 240469D5
Source: Rabbit	UNIPROT ID: Q14676	
Isotype: IgG	Full Name: mediator of DNA damage checkpoint	
Immunogen Catalog Number: AG20135	1	
	Calculated MW: 2089 aa, 227 kDa	

## Applications

**Tested Applications:**  
Cytometric bead array, Indirect ELISA, IF/ICC, WB

**Species Specificity:**  
human

## Background Information

### Storage

**Storage:**  
Store at -80°C.  
**The product is shipped with ice packs. Upon receipt, store it immediately at -80°C**

**Storage Buffer:**  
PBS Only

For technical support and original validation data for this product please contact:

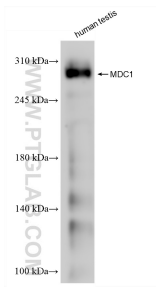
T: 4006900926

E: [Proteintech-CN@ptglab.com](mailto:Proteintech-CN@ptglab.com)

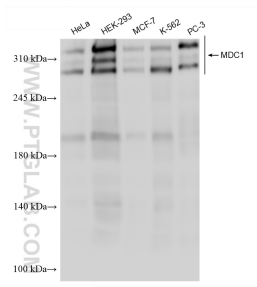
W: [ptgcn.com](http://ptgcn.com)

**This product is exclusively available under Proteintech Group brand and is not available to purchase from any other manufacturer.**

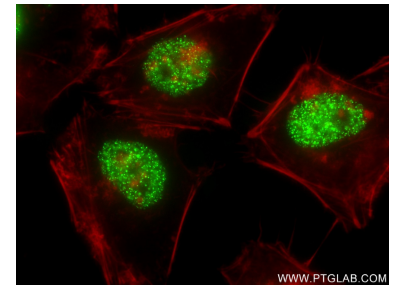
## Selected Validation Data



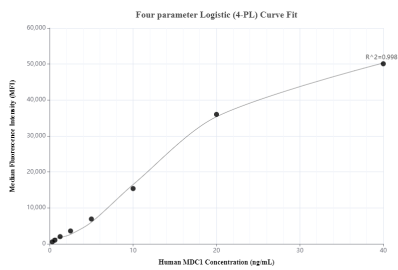
human testis tissue were subjected to SDS PAGE followed by western blot with 83496-1-RR (MDC1 antibody) at dilution of 1:1000 incubated at room temperature for 1.5 hours. This data was developed using the same antibody clone with 83496-1-PBS in a different storage buffer formulation.



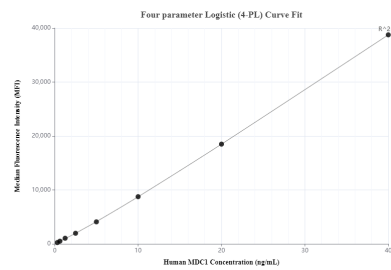
Various lysates were subjected to SDS PAGE followed by western blot with 83496-1-RR (MDC1 antibody) at dilution of 1:1000 incubated at room temperature for 1.5 hours. This data was developed using the same antibody clone with 83496-1-PBS in a different storage buffer formulation.



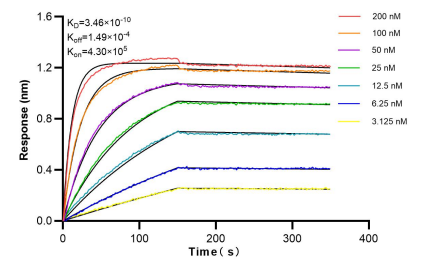
Immunofluorescent analysis of (4% PFA) fixed HeLa cells using MDC1 antibody (83496-1-RR, Clone: 240469D5 ) at dilution of 1:300 and CoraLite®488-Conjugated AffiniPure Goat Anti-Rabbit IgG(H+L) (SA00013-2), CL594-Phalloidin (red). This data was developed using the same antibody clone with 83496-1-PBS in a different storage buffer formulation.



Cytometric bead array standard curve of MP00487-1, MDC1 Recombinant Matched Antibody Pair, PBS Only. Capture antibody: 83496-5-PBS. Detection antibody: 83496-1-PBS. Standard: Ag20135. Range: 0.313-40 ng/mL



Cytometric bead array standard curve of MP00487-3, MDC1 Recombinant Matched Antibody Pair, PBS Only. Capture antibody: 83496-2-PBS. Detection antibody: 83496-1-PBS. Standard: Ag20135. Range: 0.313-40 ng/mL



Bi-layer interferometry (BLI) kinetic assays of 83496-1-RR against Human MDC1 were performed. The affinity constant is 0.346 nM.