

For Research Use Only

Integrin beta-5 Recombinant antibody, PBS Only (Detector)



Catalog Number: 83514-1-PBS

Basic Information

Catalog Number: 83514-1-PBS	GenBank Accession Number: BC006541	Purification Method: Protein A purification
Size: 1 mg/ml	GeneID (NCBI): 3693	CloneNo.: 240401C12
Source: Rabbit	UNIPROT ID: P18084	
Isotype: IgG	Full Name: integrin, beta 5	
Immunogen Catalog Number: AG29783	Calculated MW: 88 kDa	

Applications

Tested Applications:
Cytometric bead array, Sandwich ELISA, Indirect ELISA, Sample test

Species Specificity:
human

Background Information

Storage

Storage:
Store at -80°C.
The product is shipped with ice packs. Upon receipt, store it immediately at -80°C

Storage Buffer:
PBS Only

For technical support and original validation data for this product please contact:

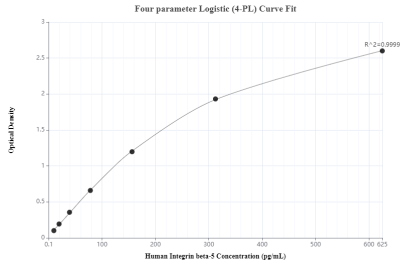
T: 4006900926

E: Proteintech-CN@ptglab.com

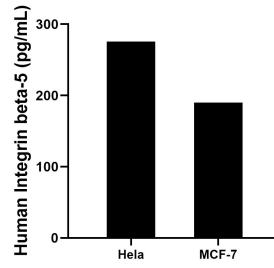
W: ptgcn.com

This product is exclusively available under Proteintech Group brand and is not available to purchase from any other manufacturer.

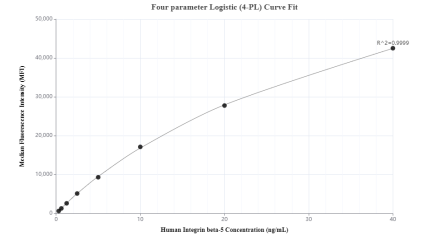
Selected Validation Data



Sandwich ELISA standard curve of MP00512-4, Integrin beta-5 Recombinant Matched Antibody Pair - PBS only. 83514-3-PBS was coated to a plate as the capture antibody and incubated with serial dilutions of standard Ag29783. 83514-1-PBS was HRP conjugated as the detection antibody. Range: 9.766-625 pg/mL



The mean Integrin beta-5 concentration was determined to be 275.71 pg/mL in HeLa cell extract based on a 2.8 mg/mL extract load and 190.06 pg/mL in MCF-7 cell extract based on a 3.1 mg/mL extract load.



Cytometric bead array standard curve of MP00512-3, Integrin beta-5 Recombinant Matched Antibody Pair, PBS Only. Capture antibody: 83514-4-PBS. Detection antibody: 83514-1-PBS. Standard: Ag29783. Range: 0.313-40 ng/mL