

For Research Use Only

# MRPL40 Recombinant antibody, PBS Only

Catalog Number: 83515-4-PBS



## Basic Information

<b>Catalog Number:</b> 83515-4-PBS	<b>GenBank Accession Number:</b> BC009707	<b>Purification Method:</b> Protein A purification
<b>Size:</b> 1 mg/ml	<b>GeneID (NCBI):</b> 64976	<b>CloneNo.:</b> 240506A9
<b>Source:</b> Rabbit	<b>UNIPROT ID:</b> Q9NQ50	
<b>Isotype:</b> IgG	<b>Full Name:</b> mitochondrial ribosomal protein L40	
<b>Immunogen Catalog Number:</b> AG10341	<b>Calculated MW:</b> 206 aa, 24 kDa	
	<b>Observed MW:</b> 18-24 kDa	

## Applications

**Tested Applications:**  
WB, IHC, IF/ICC, ELISA

**Species Specificity:**  
human

## Background Information

MRPL40, also known as NLVCF and URIM, belongs to the mitochondrion-specific ribosomal protein mL40 family. MRPL40 encodes the mitochondrial ribosomal protein L40 for the larger 39S subunit of mitochondrial ribosomes. MRPL40 is widely expressed in human organs and tissues, including the heart, brain, placenta, lung, liver, skeletal muscle, kidney, pancreas, spleen, thymus, prostate, ovary, small intestine, colon, peripheral blood lymphocyte (PBL), and testis. MRPL40 is also expressed in human fetuses and mouse embryos, suggesting its important role in fetal development (PMID: 36891938).

## Storage

**Storage:**  
Store at -80°C.  
**The product is shipped with ice packs. Upon receipt, store it immediately at -80°C**

**Storage Buffer:**  
PBS Only

For technical support and original validation data for this product please contact:

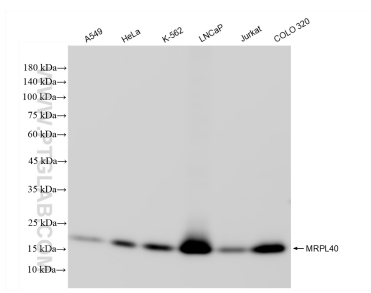
T: 4006900926

E: [Proteintech-CN@ptglab.com](mailto:Proteintech-CN@ptglab.com)

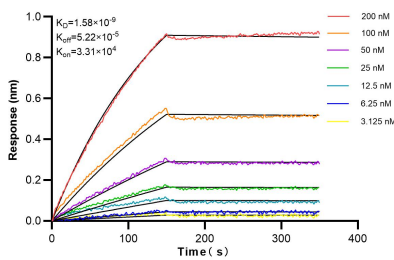
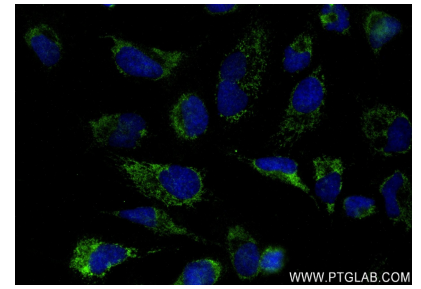
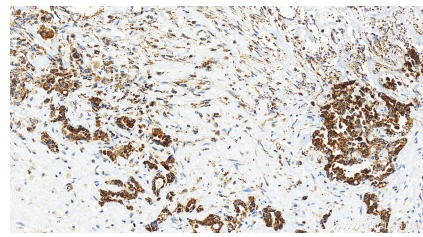
W: [ptgcn.com](http://ptgcn.com)

**This product is exclusively available under Proteintech Group brand and is not available to purchase from any other manufacturer.**

## Selected Validation Data



Various lysates were subjected to SDS PAGE followed by western blot with 83515-4-RR (MRPL40 antibody) at dilution of 1:10000 incubated at room temperature for 1.5 hours. This data was developed using the same antibody clone with 83515-4-PBS in a different storage buffer formulation.



Bi-layer interferometry (BLI) kinetic assays of 83515-4-RR against Human MRPL40 were performed. The affinity constant is 1.56 nM.