

For Research Use Only

# MRPL40 Recombinant antibody

Catalog Number: 83515-4-RR



## Basic Information

<b>Catalog Number:</b> 83515-4-RR	<b>GenBank Accession Number:</b> BC009707	<b>Purification Method:</b> Protein A purification
<b>Size:</b> 1000 ug/ml	<b>GeneID (NCBI):</b> 64976	<b>CloneNo.:</b> 240506A9
<b>Source:</b> Rabbit	<b>UNIPROT ID:</b> Q9NQ50	<b>Recommended Dilutions:</b> WB 1:5000-1:50000 IHC 1:50-1:500 IF/ICC 1:200-1:800
<b>Isotype:</b> IgG	<b>Full Name:</b> mitochondrial ribosomal protein L40	
<b>Immunogen Catalog Number:</b> AG10341	<b>Calculated MW:</b> 206 aa, 24 kDa	
	<b>Observed MW:</b> 18-24 kDa	

## Applications

**Tested Applications:**  
WB, IHC, IF/ICC, ELISA

**Species Specificity:**  
human

**Note-IHC: suggested antigen retrieval with TE buffer pH 9.0; (\*) Alternatively, antigen retrieval may be performed with citrate buffer pH 6.0**

**Positive Controls:**

**WB:** A549 cells, HeLa cells, K-562 cells, LNCaP cells, Jurkat cells, COLO 320 cells

**IHC:** human intrahepatic cholangiocarcinoma tissue,

**IF/ICC:** HeLa cells,

## Background Information

MRPL40, also known as NLVCF and URIM, belongs to the mitochondrion-specific ribosomal protein mL40 family. MRPL40 encodes the mitochondrial ribosomal protein L40 for the larger 39S subunit of mitochondrial ribosomes. MRPL40 is widely expressed in human organs and tissues, including the heart, brain, placenta, lung, liver, skeletal muscle, kidney, pancreas, spleen, thymus, prostate, ovary, small intestine, colon, peripheral blood lymphocyte (PBL), and testis. MRPL40 is also expressed in human fetuses and mouse embryos, suggesting its important role in fetal development (PMID: 36891938).

## Storage

**Storage:**  
Store at -20°C. Stable for one year after shipment.  
**Storage Buffer:**  
PBS with 0.02% sodium azide and 50% glycerol pH 7.3.  
Aliquoting is unnecessary for -20°C storage

For technical support and original validation data for this product please contact:

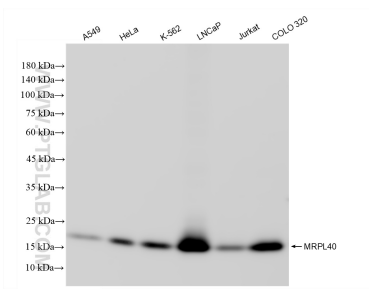
T: 4006900926

E: [Proteintech-CN@ptglab.com](mailto:Proteintech-CN@ptglab.com)

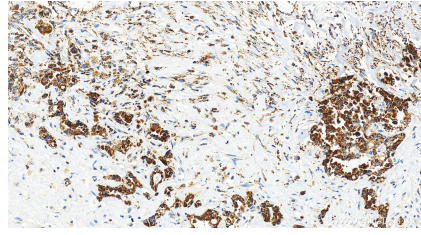
W: [ptgcn.com](http://ptgcn.com)

**This product is exclusively available under Proteintech Group brand and is not available to purchase from any other manufacturer.**

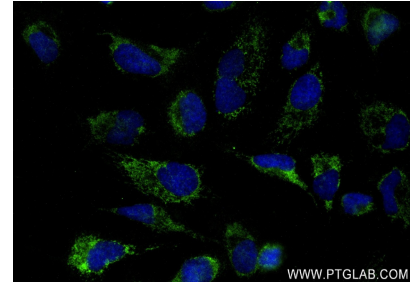
## Selected Validation Data



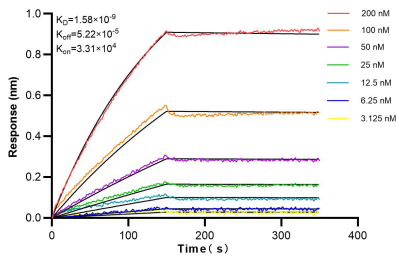
Various lysates were subjected to SDS PAGE followed by western blot with 83515-4-RR (MRPL40 antibody) at dilution of 1:10000 incubated at room temperature for 1.5 hours.



Immunohistochemical analysis of paraffin-embedded human intrahepatic cholangiocarcinoma tissue slide using 83515-4-RR (MRPL40 antibody) at dilution of 1:200 (under 20x lens). Heat mediated antigen retrieval with Tris-EDTA buffer (pH 9.0).



Immunofluorescent analysis of (4% PFA) fixed HeLa cells using MRPL40 antibody (83515-4-RR, Clone: 240506A9) at dilution of 1:400 and CoraLite®488-Conjugated AffiniPure Goat Anti-Rabbit IgG(H+L) (SA00013-2).



Bi-layer interferometry (BLI) kinetic assays of 83515-4-RR against Human MRPL40 were performed. The affinity constant is 1.56 nM.