

For Research Use Only

SMPD2 Recombinant antibody, PBS Only (Detector)



Catalog Number: 83520-3-PBS

Basic Information

Catalog Number:

83520-3-PBS

Size:

1 mg/ml

Source:

Rabbit

Isotype:

IgG

Immunogen Catalog Number:

AG7367

GenBank Accession Number:

BC000038

GeneID (NCBI):

6610

UNIPROT ID:

O60906

Full Name:

sphingomyelin phosphodiesterase 2,
neutral membrane (neutral
sphingomyelinase)

Calculated MW:

48 kDa

Purification Method:

Protein A purification

CloneNo.:

240400B5

Applications

Tested Applications:

WB, Cytometric bead array, Indirect ELISA

Species Specificity:

human

Background Information

Storage

Storage:

Store at -80°C.

The product is shipped with ice packs. Upon receipt, store it immediately at -80°C

Storage Buffer:

PBS Only

For technical support and original validation data for this product please contact:

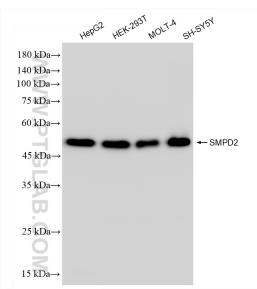
T: 4006900926

E: Proteintech-CN@ptglab.com

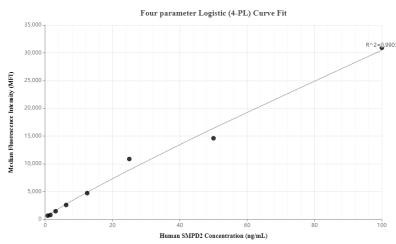
W: ptgcn.com

This product is exclusively available under Proteintech Group brand and is not available to purchase from any other manufacturer.

Selected Validation Data



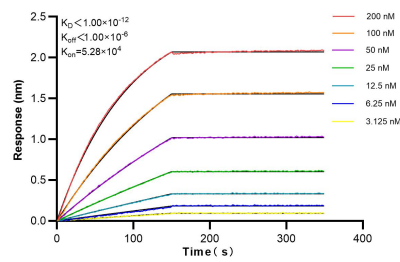
Various lysates were subjected to SDS PAGE followed by western blot with 83520-3-RR (SMPD2 antibody) at dilution of 1:10000 incubated at room temperature for 1.5 hours. This data was developed using the same antibody clone with 83520-3-PBS in a different storage buffer formulation.



Cytometric bead array standard curve of MP00518-1, SMPD2 Recombinant Matched Antibody Pair, PBS Only. Capture antibody: 83520-1-PBS. Detection antibody: 83520-3-PBS. Standard: Ag7367. Range: 0.78-100 ng/mL.

1×10^6 U2OS cells were intracellularly stained with 0.25 μ g SMPD2 Recombinant antibody (83520-3-RR, Clone:240400B5) and APC-Conjugated AffiniPure Goat Anti-Rabbit IgG(H+L)(red), or 0.25 μ g Isotype Control (blue). Cells were fixed with 4% PFA and permeabilized with Flow Cytometry Perm Buffer (PF00011-C). This data was developed using the same antibody clone with 83520-3-PBS in a different storage buffer formulation.

1×10^6 HeLa cells were intracellularly stained with 0.25 μ g SMPD2 Recombinant antibody (83520-3-RR, Clone:240400B5) and APC-Conjugated AffiniPure Goat Anti-Rabbit IgG(H+L)(red), or 0.25 μ g Isotype Control (blue). Cells were fixed with 4% PFA and permeabilized with Flow Cytometry Perm Buffer (PF00011-C). This data was developed using the same antibody clone with 83520-3-PBS in a different storage buffer formulation.



Biolayer interferometry (BLI) kinetic assays of 83520-3-RR against Human SMPD2 were performed. The affinity constant is below 1 pM.