

For Research Use Only

# SMPD2 Recombinant antibody

Catalog Number: 83520-3-RR



## Basic Information

**Catalog Number:**

83520-3-RR

**Size:**

1000 µg/ml

**Source:**

Rabbit

**Isotype:**

IgG

**Immunogen Catalog Number:**

AG7367

**GenBank Accession Number:**

BC000038

**GeneID (NCBI):**

6610

**UNIPROT ID:**

O60906

**Full Name:**

sphingomyelin phosphodiesterase 2,  
neutral membrane (neutral  
sphingomyelinase)

**Calculated MW:**

48 kDa

**Observed MW:**

48 kDa

**Purification Method:**

Protein A purification

**CloneNo.:**

240400B5

**Recommended Dilutions:**

WB 1:5000-1:50000

## Applications

**Tested Applications:**

WB, FC (Intra), ELISA

**Species Specificity:**

human

**Positive Controls:**

WB : HepG2 cells, HEK-293T cells, MOLT-4 cells, SH-SY5Y cells

## Background Information

SMPD2, Sphingomyelin phosphodiesterase 2, is also named as Lyso-platelet-activating factor-phospholipase C and neutral sphingomyelinase (nSMase). It is involved in the sphingolipid metabolism pathway, which can catalyze the hydrolysis of sphingomyelin to form ceramide and phosphocholine. Smpd2/Smpd3 double-mutant mice were found to have severe retardation of late embryonic and postnatal growth and delayed puberty, belonging to hypothalamus-induced combined pituitary hormone deficiency (PubMed: 15764706).

## Storage

**Storage:**

Store at -20°C. Stable for one year after shipment.

**Storage Buffer:**

PBS with 0.02% sodium azide and 50% glycerol pH 7.3.

Aliquoting is unnecessary for -20°C storage

For technical support and original validation data for this product please contact:

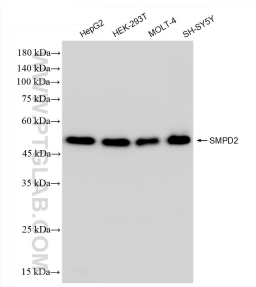
T: 4006900926

E: Proteintech-CN@ptglab.com

W: ptgcn.com

**This product is exclusively available under Proteintech Group brand and is not available to purchase from any other manufacturer.**

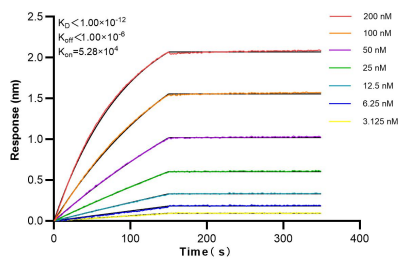
## Selected Validation Data



Various lysates were subjected to SDS PAGE followed by western blot with 83520-3-RR (SMPD2 antibody) at dilution of 1:10000 incubated at room temperature for 1.5 hours.

1x10<sup>6</sup> U2OS cells were intracellularly stained with 0.25 ug SMPD2 Recombinant antibody (83520-3-RR, Clone:240400B5) and APC-Conjugated AffiniPure Goat Anti-Rabbit IgG(H+L)(red), or 0.25 ug Isotype Control (blue). Cells were fixed with 4% PFA and permeabilized with Flow Cytometry Perm Buffer (PF00011-C).

1x10<sup>6</sup> HeLa cells were intracellularly stained with 0.25 ug SMPD2 Recombinant antibody (83520-3-RR, Clone:240400B5) and APC-Conjugated AffiniPure Goat Anti-Rabbit IgG(H+L)(red), or 0.25 ug Isotype Control (blue). Cells were fixed with 4% PFA and permeabilized with Flow Cytometry Perm Buffer (PF00011-C).



Biolayer interferometry (BLI) kinetic assays of 83520-3-RR against Human SMPD2 were performed. The affinity constant is below 1 pM.