

For Research Use Only

CEACAM1 Recombinant antibody, PBS Only (Capture)



Catalog Number: 83524-3-PBS

Basic Information

Catalog Number:

83524-3-PBS

Size:

1 mg/ml

Source:

Rabbit

Isotype:

IgG

GenBank Accession Number:

BC014473

GeneID (NCBI):

634

UNIPROT ID:

P13688

Full Name:

carcinoembryonic antigen-related
cell adhesion molecule 1 (biliary
glycoprotein)

Calculated MW:

526 aa, 58 kDa

Purification Method:

Protein A purification

CloneNo.:

240497B4

Applications

Tested Applications:

WB, Indirect ELISA, Cytometric bead array

Species Specificity:

Human

Background Information

Storage

Storage:

Store at -80°C.

Storage Buffer:

PBS Only

For technical support and original validation data for this product please contact:

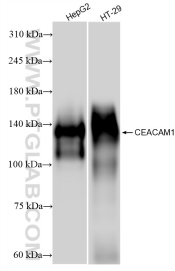
T: 4006900926

E: Proteintech-CN@ptglab.com

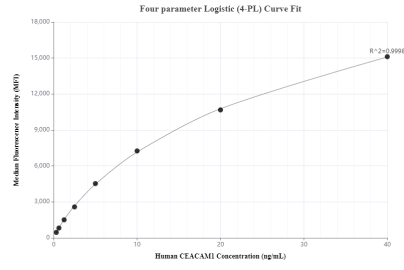
W: ptgcn.com

This product is exclusively available under Proteintech Group brand and is not available to purchase from any other manufacturer.

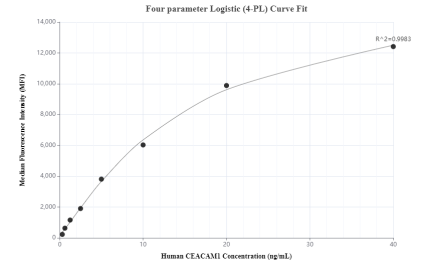
Selected Validation Data



Various lysates were subjected to SDS PAGE followed by western blot with 83524-3-RR (CEACAM1 antibody) at dilution of 1:5000 incubated at room temperature for 1.5 hours. This data was developed using the same antibody clone with 83524-3-PBS in a different storage buffer formulation.



Cytometric bead array standard curve of MP00520-2, CEACAM1 Recombinant Matched Antibody Pair, PBS Only. Capture antibody: 83524-3-PBS. Detection antibody: 83524-4-PBS. Standard: Eg0314. Range: 0.313-40 ng/mL.



Cytometric bead array standard curve of MP00520-3, CEACAM1 Recombinant Matched Antibody Pair, PBS Only. Capture antibody: 83524-3-PBS. Detection antibody: 83524-2-PBS. Standard: Eg0314. Range: 0.313-40 ng/mL.