

For Research Use Only

SLC35B4 Recombinant antibody, PBS Only (Capture)



Catalog Number: 83527-3-PBS

Basic Information

Catalog Number:

83527-3-PBS

Size:

1 mg/ml

Source:

Rabbit

Isotype:

IgG

Immunogen Catalog Number:

AG22669

GenBank Accession Number:

BC008413

GeneID (NCBI):

84912

UNIPROT ID:

Q96950

Full Name:

solute carrier family 35, member B4

Purification Method:

Protein A purification

CloneNo.:

240332F10

Applications

Tested Applications:

WB, Cytometric bead array, Indirect ELISA

Species Specificity:

human

Background Information

Storage

Storage:

Store at -80°C.

The product is shipped with ice packs. Upon receipt, store it immediately at -80°C

Storage Buffer:

PBS Only

For technical support and original validation data for this product please contact:

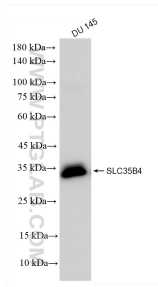
T: 4006900926

E: Proteintech-CN@ptglab.com

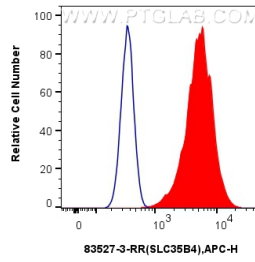
W: ptgcn.com

This product is exclusively available under Proteintech Group brand and is not available to purchase from any other manufacturer.

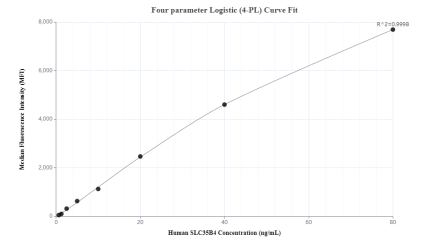
Selected Validation Data



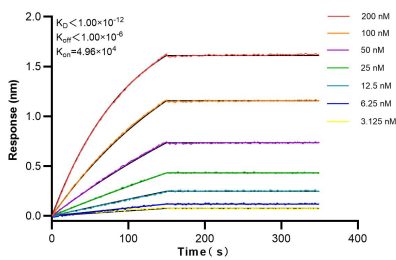
DU 145 cells were subjected to SDS PAGE followed by western blot with 83527-3-RR (SLC35B4 antibody) at dilution of 1:3000 incubated at room temperature for 1.5 hours. This data was developed using the same antibody clone with 83527-3-PBS in a different storage buffer formulation.



1×10^6 HepG2 cells were intracellularly stained with 0.25 μ g SLC35B4 Recombinant Antibody (83527-3-RR, Clone:240332F10) and APC-Conjugated AffiniPure Goat Anti-Rabbit IgG(H+L) (red), or 0.25 μ g Isotype Control (blue). Cells were fixed with 4% PFA and permeabilized with Flow Cytometry Perm Buffer (PF00011-C). This data was developed using the same antibody clone with 83527-3-PBS in a different storage buffer formulation.



Cytometric bead array standard curve of MP00497-1, SLC35B4 Recombinant Matched Antibody Pair, PBS Only. Capture antibody: 83527-3-PBS. Detection antibody: 83527-2-PBS. Standard: Ag22669. Range: 0.625-80 ng/mL



Bi-layer interferometry (BLI) kinetic assays of 83527-3-RR against Human SLC35B4 were performed. The affinity constant is below 1 pM.