

For Research Use Only

SYNPO2L Recombinant antibody, PBS Only (Detector)



Catalog Number: 83532-1-PBS

Basic Information

Catalog Number: 83532-1-PBS	GenBank Accession Number: BC142635	Purification Method: Protein A purification
Size: 1 mg/ml	GeneID (NCBI): 79933	CloneNo.: 240523C12
Source: Rabbit	UNIPROT ID: Q9H987	
Isotype: IgG	Full Name: synaptopodin 2-like	
Immunogen Catalog Number: AG34027	Calculated MW: 977 aa, 102 kDa	

Applications

Tested Applications:
Indirect ELISA, Cytometric bead array

Species Specificity:
Human

Background Information

Storage

Storage:
Store at -80°C.
The product is shipped with ice packs. Upon receipt, store it immediately at -80°C

Storage Buffer:
PBS Only

For technical support and original validation data for this product please contact:

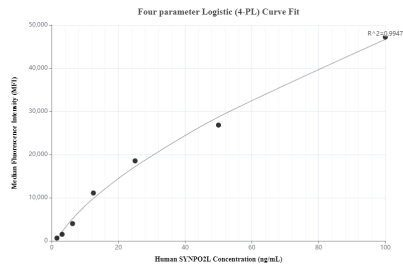
T: 4006900926

E: Proteintech-CN@ptglab.com

W: ptgcn.com

This product is exclusively available under Proteintech Group brand and is not available to purchase from any other manufacturer.

Selected Validation Data



Cytometric bead array standard curve of MP00513-1, SYNPO2L Recombinant Matched Antibody Pair, PBS Only. Capture antibody: 83532-3-PBS. Detection antibody: 83532-1-PBS. Standard: Ag34027. Range: 1.56-100 ng/mL.