

For Research Use Only

# SYNPO2L Recombinant antibody, PBS Only (Capture)



Catalog Number: 83532-3-PBS

## Basic Information

Catalog Number: 83532-3-PBS	GenBank Accession Number: BC142635	Purification Method: Protein A purification
Size: 1 mg/ml	GeneID (NCBI): 79933	CloneNo.: 240523F12
Source: Rabbit	UNIPROT ID: Q9H987	
Isotype: IgG	Full Name: synaptopodin 2-like	
Immunogen Catalog Number: AG34027	Calculated MW: 977 aa, 102 kDa	

## Applications

**Tested Applications:**  
Cytometric bead array, Indirect ELISA, IF/ICC

**Species Specificity:**  
human

## Background Information

### Storage

**Storage:**  
Store at -80°C.  
**The product is shipped with ice packs. Upon receipt, store it immediately at -80°C**

**Storage Buffer:**  
PBS Only

For technical support and original validation data for this product please contact:

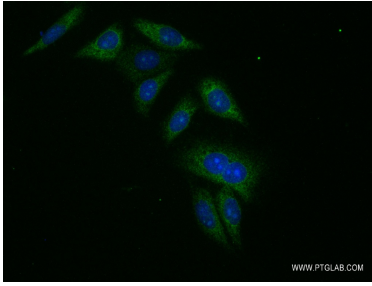
T: 4006900926

E: [Proteintech-CN@ptglab.com](mailto:Proteintech-CN@ptglab.com)

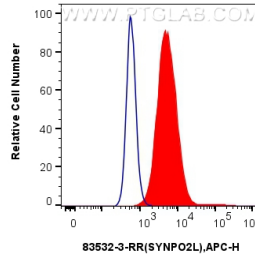
W: [ptgcn.com](http://ptgcn.com)

**This product is exclusively available under Proteintech Group brand and is not available to purchase from any other manufacturer.**

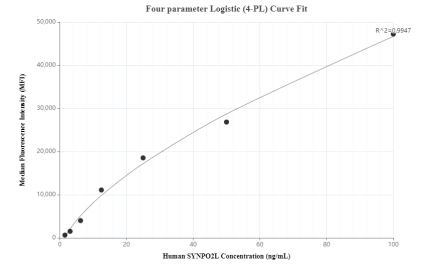
## Selected Validation Data



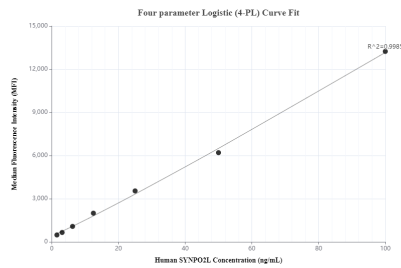
Immunofluorescent analysis of (-20°C Ethanol) fixed HepG2 cells using SYNPO2L antibody (83532-3-RR, Clone: 240523F12) at dilution of 1:200 and CoraLite®488-Conjugated AffiniPure Goat Anti-Rabbit IgG(H+L) (SA00013-2). This data was developed using the same antibody clone with 83532-3-PBS in a different storage buffer formulation.



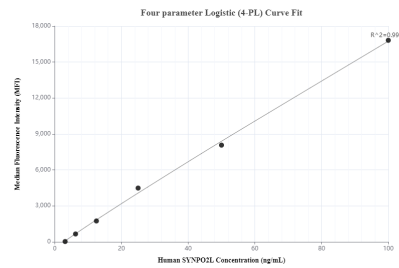
1x10<sup>6</sup> Caco-2 cells were intracellularly stained with 0.25 ug SYNPO2L Recombinant antibody (83532-3-RR, Clone:240523F12) and APC-Conjugated AffiniPure Goat Anti-Rabbit IgG(H+L) (red), or 0.25 ug Isotype Control (blue). Cells were fixed with 4% PFA and permeabilized with Flow Cytometry Perm Buffer (PF00011-C). This data was developed using the same antibody clone with 83532-3-PBS in a different storage buffer formulation.



Cytometric bead array standard curve of MP00513-1, SYNPO2L Recombinant Matched Antibody Pair, PBS Only. Capture antibody: 83532-3-PBS. Detection antibody: 83532-1-PBS. Standard: Ag34027. Range: 1.56-100 ng/mL.



Cytometric bead array standard curve of MP00513-2, SYNPO2L Recombinant Matched Antibody Pair, PBS Only. Capture antibody: 83532-3-PBS. Detection antibody: 83532-4-PBS. Standard: Ag34027. Range: 1.56-100 ng/mL.



Cytometric bead array standard curve of MP00513-3, SYNPO2L Recombinant Matched Antibody Pair, PBS Only. Capture antibody: 83532-3-PBS. Detection antibody: 83532-2-PBS. Standard: Ag34027. Range: 3.13-100 ng/mL.