

For Research Use Only

# SYNPO2L Recombinant antibody

Catalog Number: 83532-3-RR



## Basic Information

Catalog Number:

83532-3-RR

Size:

1000 ug/ml

Source:

Rabbit

Isotype:

IgG

Immunogen Catalog Number:

AG34027

GenBank Accession Number:

BC142635

GeneID (NCBI):

79933

UNIPROT ID:

Q9H987

Full Name:

synaptopodin 2-like

Calculated MW:

977 aa, 102 kDa

Purification Method:

Protein A purification

CloneNo.:

240523F12

Recommended Dilutions:

IF/ICC 1:50-1:500

## Applications

Tested Applications:

IF/ICC, FC (Intra), ELISA

Species Specificity:

human

Positive Controls:

IF/ICC : HepG2 cells,

## Background Information

SYNPO2L belongs to the synaptopodin family and is an actin-associated protein that may play a role in modulating actin-based shape. SYNPO2L is involved in the positive regulation of Rho protein signal transduction and the positive regulation of stress fiber assembly. Loss-of-function variants in the SYNPO2L gene are associated with atrial fibrillation (PMID: 33768119).

## Storage

Storage:

Store at -20°C. Stable for one year after shipment.

Storage Buffer:

PBS with 0.02% sodium azide and 50% glycerol pH 7.3.

Aliquoting is unnecessary for -20°C storage

For technical support and original validation data for this product please contact:

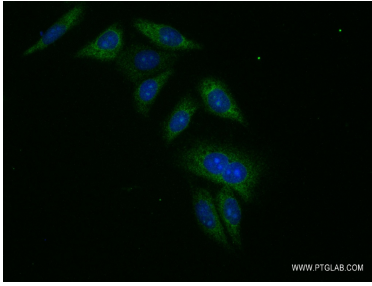
T: 4006900926

E: [Proteintech-CN@ptglab.com](mailto:Proteintech-CN@ptglab.com)

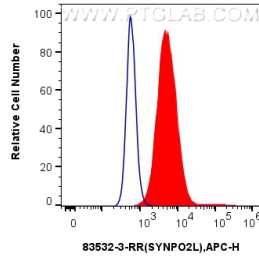
W: [ptgcn.com](http://ptgcn.com)

This product is exclusively available under Proteintech Group brand and is not available to purchase from any other manufacturer.

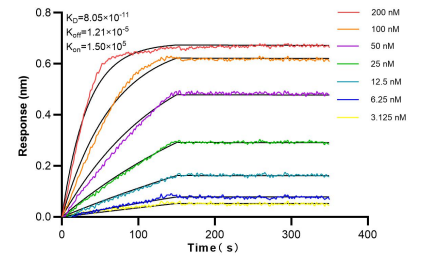
## Selected Validation Data



Immunofluorescent analysis of (-20°C Ethanol) fixed HepG2 cells using SYNPO2L antibody (83532-3-RR, Clone: 240523F12) at dilution of 1:200 and CoraLite®488-Conjugated AffiniPure Goat Anti-Rabbit IgG(H+L) (SA00013-2).



1x10<sup>6</sup> Caco-2 cells were intracellularly stained with 0.25 ug SYNPO2L Recombinant antibody (83532-3-RR, Clone:240523F12) and APC-Conjugated AffiniPure Goat Anti-Rabbit IgG(H+L) (red), or 0.25 ug Isotype Control (blue). Cells were fixed with 4% PFA and permeabilized with Flow Cytometry Perm Buffer (PF00011-C).



Biacore interferometry (BLI) kinetic assays of 83532-3-RR against Human SYNPO2L were performed. The affinity constant is 80.5 pM.