

For Research Use Only

# FEM1C Recombinant antibody, PBS Only



Catalog Number: 83536-1-PBS

## Basic Information

<b>Catalog Number:</b> 83536-1-PBS	<b>GenBank Accession Number:</b> BC028369	<b>Purification Method:</b> Protein A purification
<b>Size:</b> 1 mg/ml	<b>GeneID (NCBI):</b> 56929	<b>CloneNo.:</b> 240126G5
<b>Source:</b> Rabbit	<b>UNIPROT ID:</b> Q96JPO	
<b>Isotype:</b> IgG	<b>Full Name:</b> fem-1 homolog c (C. elegans)	
<b>Immunogen Catalog Number:</b> AG5099	<b>Calculated MW:</b> 69 kDa	

## Applications

**Tested Applications:**  
WB, ELISA

**Species Specificity:**  
Human

## Background Information

Protein fem-1 homolog C (FEM1C) is involved in protein modification and ubiquitination. Probable component of an E3 ubiquitin-protein ligase complex, in which it may act as a substrate recognition subunit. Highly expressed in kidney, cardiac tissue, skeletal muscle and testis. Expressed at lower levels in other tissues, including cartilage. This antibody specifically recognizes the 69kd FEM1C protein.

## Storage

**Storage:**  
Store at -80°C.  
**The product is shipped with ice packs. Upon receipt, store it immediately at -80°C**

**Storage Buffer:**  
PBS Only

For technical support and original validation data for this product please contact:

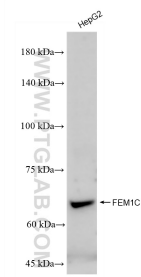
T: 4006900926

E: [Proteintech-CN@ptglab.com](mailto:Proteintech-CN@ptglab.com)

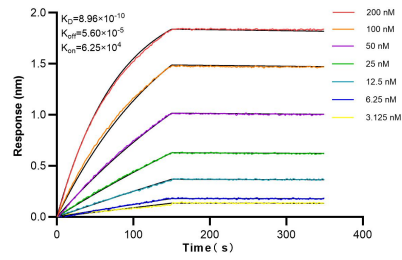
W: [ptgcn.com](http://ptgcn.com)

**This product is exclusively available under Proteintech Group brand and is not available to purchase from any other manufacturer.**

## Selected Validation Data



HepG2 cells were subjected to SDS PAGE followed by western blot with 83536-1-RR (FEM1C antibody) at dilution of 1:1000 incubated at room temperature for 1.5 hours. This data was developed using the same antibody clone with 83536-1-PBS in a different storage buffer formulation.



Biolayer interferometry (BLI) kinetic assays of 83536-1-RR against Human FEM1C were performed. The affinity constant is 0.896 nM.