

For Research Use Only

# LONP1 Recombinant antibody, PBS Only (Capture/Detector)



Catalog Number:83552-1-PBS

## Basic Information

<b>Catalog Number:</b> 83552-1-PBS	<b>GenBank Accession Number:</b> BC000235	<b>Purification Method:</b> Protein A purification
<b>Size:</b> 1 mg/ml	<b>GeneID (NCBI):</b> 9361	<b>CloneNo.:</b> 240460E1
<b>Source:</b> Rabbit	<b>UNIPROT ID:</b> P36776	
<b>Isotype:</b> IgG	<b>Full Name:</b> lon peptidase 1, mitochondrial	
<b>Immunogen Catalog Number:</b> AG7196	<b>Calculated MW:</b> 106 kDa	

## Applications

**Tested Applications:**  
Indirect ELISA, Cytometric bead array

**Species Specificity:**  
Human

## Background Information

### Storage

**Storage:**  
Store at -80°C.  
**Storage Buffer:**  
PBS Only

For technical support and original validation data for this product please contact:

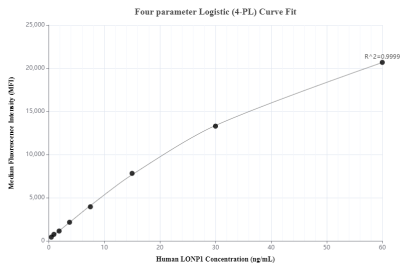
T: 4006900926

E: [Proteintech-CN@ptglab.com](mailto:Proteintech-CN@ptglab.com)

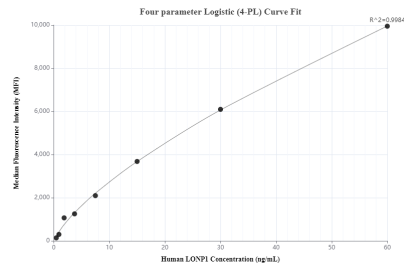
W: [ptgcn.com](http://ptgcn.com)

This product is exclusively available under Proteintech Group brand and is not available to purchase from any other manufacturer.

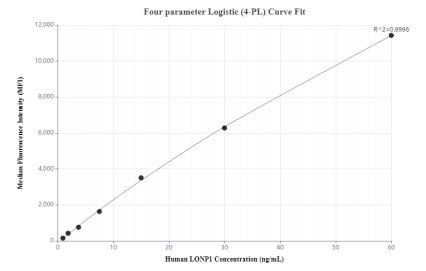
## Selected Validation Data



Cytometric bead array standard curve of MP00531-1, LONP1 Recombinant Matched Antibody Pair, PBS Only. Capture antibody: 83552-2-PBS. Detection antibody: 83552-1-PBS. Standard: Ag7196. Range: 0.469-60 ng/mL



Cytometric bead array standard curve of MP00531-2, LONP1 Recombinant Matched Antibody Pair, PBS Only. Capture antibody: 83552-2-PBS. Detection antibody: 83552-1-PBS. Standard: Ag7196. Range: 0.469-60 ng/mL



Cytometric bead array standard curve of MP00531-3, LONP1 Recombinant Matched Antibody Pair, PBS Only. Capture antibody: 83552-3-PBS. Detection antibody: 83552-1-PBS. Standard: Ag7196. Range: 0.938-60 ng/mL