

For Research Use Only

MAGI2 Recombinant antibody, PBS Only



Catalog Number: 83561-6-PBS

Basic Information

Catalog Number: 83561-6-PBS	GenBank Accession Number: BC150277	Purification Method: Protein A purification
Size: 1 mg/ml	GeneID (NCBI): 9863	CloneNo.: 240512C10
Source: Rabbit	UNIPROT ID: Q86UL8	
Isotype: IgG	Full Name: membrane associated guanylate kinase, WW and PDZ domain containing 2	
Immunogen Catalog Number: AG18279	Calculated MW: 1455 aa, 159 kDa	

Applications

Tested Applications:
ELISA, WB

Species Specificity:
rat, human

Background Information

Storage

Storage:
Store at -80°C.
The product is shipped with ice packs. Upon receipt, store it immediately at -80°C

Storage Buffer:
PBS Only

For technical support and original validation data for this product please contact:

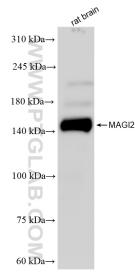
T: 4006900926

E: Proteintech-CN@ptglab.com

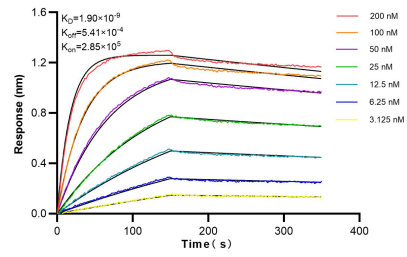
W: ptgcn.com

This product is exclusively available under Proteintech Group brand and is not available to purchase from any other manufacturer.

Selected Validation Data



rat brain tissue were subjected to SDS PAGE followed by western blot with 83561-6-RR (MAGI2 antibody) at dilution of 1:5000 incubated at room temperature for 1.5 hours. This data was developed using the same antibody clone with 83561-6-PBS in a different storage buffer formulation.



Biolayer interferometry (BLI) kinetic assays of 83561-6-RR against Human MAGI2 were performed. The affinity constant is 1.90 nM.