

For Research Use Only

TMEM16A/DOG1 Recombinant antibody, PBS Only (Capture)

Catalog Number: 83567-7-PBS



Basic Information

Catalog Number: 83567-7-PBS	GenBank Accession Number: BC027590	Purification Method: Protein A purification
Size: 1 mg/ml	GeneID (NCBI): 55107	CloneNo.: 241464D1
Source: Rabbit	UNIPROT ID: Q5XXA6	
Isotype: IgG	Full Name: anoctamin 1, calcium activated chloride channel	
Immunogen Catalog Number: AG3320	Calculated MW: 986 aa, 114 kDa	

Applications

Tested Applications:
Sandwich ELISA, Indirect ELISA, Sample test

Species Specificity:
human

Background Information

Storage

Storage:
Store at -80°C.
The product is shipped with ice packs. Upon receipt, store it immediately at -80°C

Storage Buffer:
PBS Only

For technical support and original validation data for this product please contact:

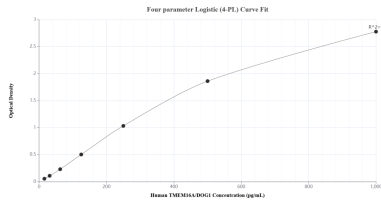
T: 4006900926

E: Proteintech-CN@ptglab.com

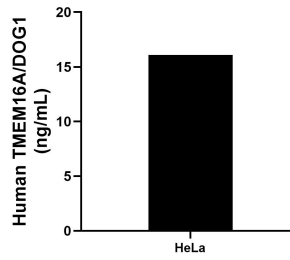
W: ptgcn.com

This product is exclusively available under Proteintech Group brand and is not available to purchase from any other manufacturer.

Selected Validation Data



Sandwich ELISA standard curve of MP01115-3, Human TMEM16A/DOG1 Recombinant Matched Antibody Pair - PBS only. 83567-7-PBS was coated to a plate as the capture antibody and incubated with serial dilutions of standard Ag3320. 83567-3-PBS was HRP conjugated as the detection antibody. Range: 15.6-1000 pg/mL



The mean TMEM16A/DOG1 concentration was determined to be 16.1 ng/mL in HeLa cell extract based on a 1.3 mg/mL extract load.