

For Research Use Only

# KDM3A, JMJD1A Recombinant antibody, PBS Only (Capture)



Catalog Number: 83571-2-PBS

## Basic Information

Catalog Number: 83571-2-PBS	GenBank Accession Number: BC038297	Purification Method: Protein A purification
Size: 1 mg/ml	GeneID (NCBI): 55818	CloneNo.: 240532G11
Source: Rabbit	UNIPROT ID: Q9Y4C1	
Isotype: IgG	Full Name: lysine (K)-specific demethylase 3A	
Immunogen Catalog Number: AG28687	Calculated MW: 150 kDa	

## Applications

**Tested Applications:**  
WB, IF/ICC, Cytometric bead array, Indirect ELISA

**Species Specificity:**  
human

## Background Information

### Storage

**Storage:**  
Store at -80°C.  
**The product is shipped with ice packs. Upon receipt, store it immediately at -80°C**

**Storage Buffer:**  
PBS Only

For technical support and original validation data for this product please contact:

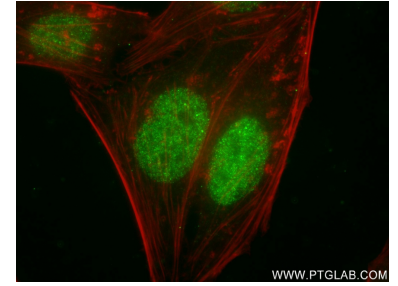
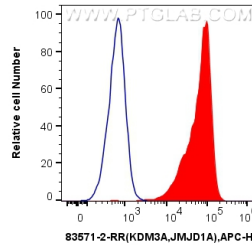
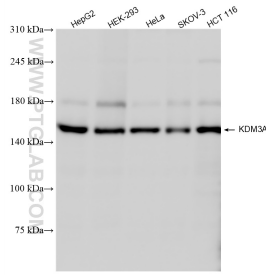
T: 4006900926

E: [Proteintech-CN@ptglab.com](mailto:Proteintech-CN@ptglab.com)

W: [ptgcn.com](http://ptgcn.com)

**This product is exclusively available under Proteintech Group brand and is not available to purchase from any other manufacturer.**

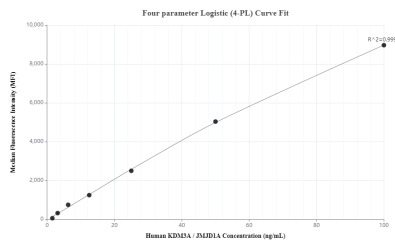
## Selected Validation Data



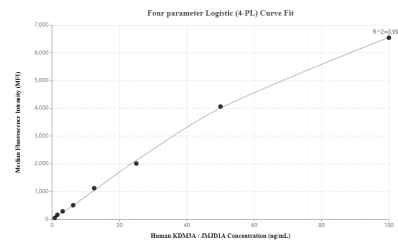
Various lysates were subjected to SDS PAGE followed by western blot with 83571-2-RR (KDM3A, JMJD1A antibody) at dilution of 1:2000 incubated at room temperature for 1.5 hours. This data was developed using the same antibody clone with 83571-2-PBS in a different storage buffer formulation.

$1 \times 10^6$  HEK-293 cells were intracellularly stained with 0.25  $\mu$ g KDM3A, JMJD1A Recombinant antibody (83571-2-RR, Clone: 240532G11) and APC-Conjugated AffiniPure Goat Anti-Rabbit IgG(H+L) (red), or 0.25  $\mu$ g Isotype Control (blue). Cells were fixed and permeabilized with Transcription Factor Staining Buffer Kit (PF00011). This data was developed using the same antibody clone with 83571-2-PBS in a different storage buffer formulation.

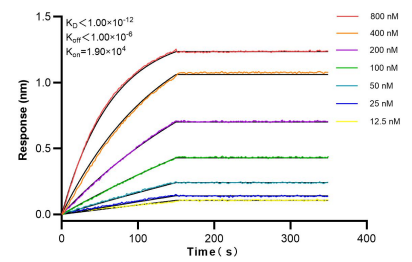
Immunofluorescent analysis of (4% PFA) fixed HepG2 cells using KDM3A, JMJD1A antibody (83571-2-RR, Clone: 240532G11) at dilution of 1:250 and CoraLite@488-Conjugated AffiniPure Goat Anti-Rabbit IgG(H+L) (SA00013-2), CL594-Phalloidin (red). This data was developed using the same antibody clone with 83571-2-PBS in a different storage buffer formulation.



Cytometric bead array standard curve of MP00565-1, KDM3A, JMJD1A Recombinant Matched Antibody Pair, PBS Only. Capture antibody: 83571-2-PBS. Detection antibody: 83571-4-PBS. Standard: Ag28687. Range: 1.56-100 ng/mL.



Cytometric bead array standard curve of MP00565-2, KDM3A, JMJD1A Recombinant Matched Antibody Pair, PBS Only. Capture antibody: 83571-2-PBS. Detection antibody: 83571-5-PBS. Standard: Ag28687. Range: 0.781-100 ng/mL.



Bi-layer interferometry (BLI) kinetic assays of 83571-2-RR against Human KDM3A, JMJD1A were performed. The affinity constant is below 1 pM.