

For Research Use Only

# KDM3A, JMJD1A Recombinant antibody

Catalog Number: 83571-2-RR



## Basic Information

<b>Catalog Number:</b> 83571-2-RR	<b>GenBank Accession Number:</b> BC038297	<b>Purification Method:</b> Protein A purification
<b>Size:</b> 1000 µg/ml	<b>GeneID (NCBI):</b> 55818	<b>CloneNo.:</b> 240532G11
<b>Source:</b> Rabbit	<b>UNIPROT ID:</b> Q9Y4C1	<b>Recommended Dilutions:</b> WB 1:1000-1:4000 IF/ICC 1:125-1:500
<b>Isotype:</b> IgG	<b>Full Name:</b> lysine (K)-specific demethylase 3A	
<b>Immunogen Catalog Number:</b> AG28687	<b>Calculated MW:</b> 150 kDa	
	<b>Observed MW:</b> 140-150 kDa	

## Applications

**Tested Applications:**  
WB, IF/ICC, FC (Intra), ELISA

**Species Specificity:**  
human

### Positive Controls:

**WB :** HepG2 cells, HEK-293 cells, HeLa cells, SKOV-3 cells, HCT 116 cells

**IF/ICC :** HepG2 cells,

## Background Information

KDM3A, also name as JMJD1A, JHDM2A, JMJD1, JMJD1A, KIAA0742 and TSGA, belongs to the JHDM2 histone demethylase family. It is a histone demethylase that specifically demethylates 'Lys-9' of histone H3, thereby playing a central role in histone code. It is involved in spermatogenesis by regulating expression of target genes such as PRM1 and TMP1 which are required for packaging and condensation of sperm chromatin. It is involved in obesity resistance through regulation of metabolic genes such as PPARA and UCP1. (PubMed:16603237), JMJD1A is a useful biomarker for hypoxic tumor cells and a prognostic marker that could be a promising therapeutic target against CRC.

## Storage

**Storage:**  
Store at -20°C. Stable for one year after shipment.

**Storage Buffer:**  
PBS with 0.02% sodium azide and 50% glycerol pH 7.3.

**Aliquoting is unnecessary for -20°C storage**

For technical support and original validation data for this product please contact:

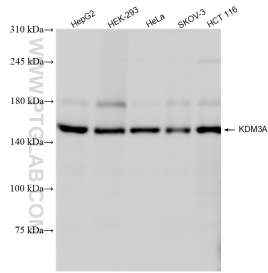
T: 4006900926

E: [Proteintech-CN@ptglab.com](mailto:Proteintech-CN@ptglab.com)

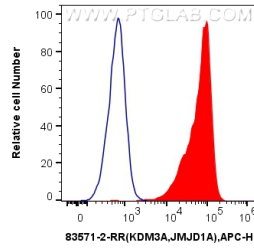
W: [ptgcn.com](http://ptgcn.com)

**This product is exclusively available under Proteintech Group brand and is not available to purchase from any other manufacturer.**

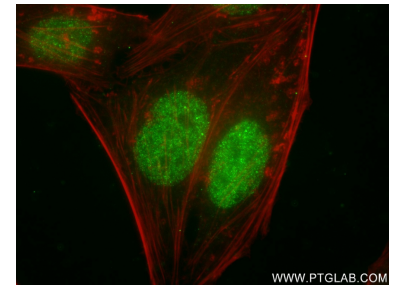
## Selected Validation Data



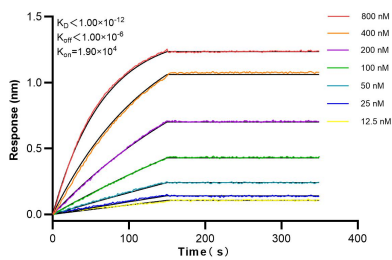
Various lysates were subjected to SDS PAGE followed by western blot with 83571-2-RR (KDM3A, JMJD1A antibody) at dilution of 1:2000 incubated at room temperature for 1.5 hours.



$1 \times 10^6$  HEK-293 cells were intracellularly stained with 0.25  $\mu$ g KDM3A, JMJD1A Recombinant antibody (83571-2-RR, Clone: 240532G11) and APC-Conjugated AffiniPure Goat Anti-Rabbit IgG(H+L) (red), or 0.25  $\mu$ g Isotype Control (blue). Cells were fixed and permeabilized with Transcription Factor Staining Buffer Kit (PF00011).



Immunofluorescent analysis of (4% PFA) fixed HepG2 cells using KDM3A, JMJD1A antibody (83571-2-RR, Clone: 240532G11) at dilution of 1:250 and CoraLite@488-Conjugated AffiniPure Goat Anti-Rabbit IgG(H+L) (SA00013-2), CL594-Phalloidin (red).



Bi-layer interferometry (BLI) kinetic assays of 83571-2-RR against Human KDM3A, JMJD1A were performed. The affinity constant is below 1 pM.