

For Research Use Only

GAR1 Recombinant antibody, PBS Only (Detector)



Catalog Number: 83577-1-PBS

Basic Information

Catalog Number: 83577-1-PBS	GenBank Accession Number: BC003413	Purification Method: Protein A purification
Size: 1 mg/ml	GeneID (NCBI): 54433	CloneNo.: 240537C11
Source: Rabbit	UNIPROT ID: Q9NY12	
Isotype: IgG	Full Name: GAR1 ribonucleoprotein homolog (yeast)	
Immunogen Catalog Number: AG2282	Calculated MW: 217 aa, 22 kDa	

Applications

Tested Applications:
IF/ICC, Cytometric bead array, Indirect ELISA

Species Specificity:
human

Background Information

Storage

Storage:
Store at -80°C.
The product is shipped with ice packs. Upon receipt, store it immediately at -80°C

Storage Buffer:
PBS Only

For technical support and original validation data for this product please contact:

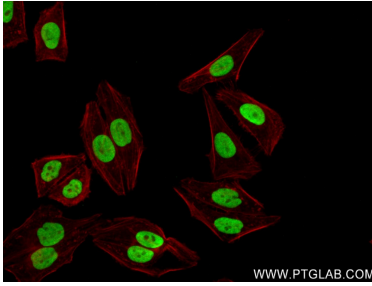
T: 4006900926

E: Proteintech-CN@ptglab.com

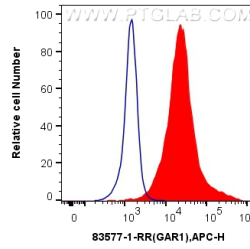
W: ptgcn.com

This product is exclusively available under Proteintech Group brand and is not available to purchase from any other manufacturer.

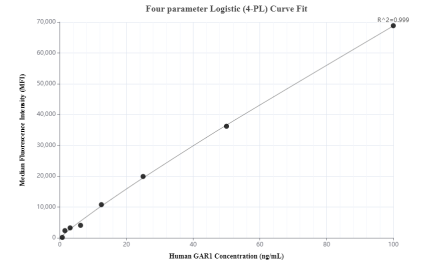
Selected Validation Data



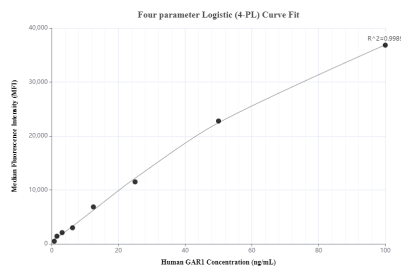
Immunofluorescent analysis of (4% PFA) fixed HepG2 cells using GAR1 antibody (83577-1-RR, Clone: 240537C11) at dilution of 1:300 and CoraLite@488-Conjugated AffiniPure Goat Anti-Rabbit IgG(H+L) (SA00013-2), CL594-Phalloidin (red). This data was developed using the same antibody clone with 83577-1-PBS in a different storage buffer formulation.



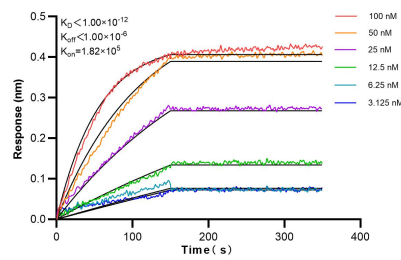
1×10^6 K562 were intracellularly stained with 0.25 ug GAR1 Recombinant antibody (83577-1-RR, Clone:240537C11) and APC-Conjugated AffiniPure Goat Anti-Rabbit IgG(H+L)(red), or 0.25 ug Isotype Control (blue). Cells were fixed and permeabilized with Transcription Factor Staining Buffer Kit (PF00011). This data was developed using the same antibody clone with 83577-1-PBS in a different storage buffer formulation.



Cytometric bead array standard curve of MP00568-1, GAR1 Recombinant Matched Antibody Pair, PBS Only. Capture antibody: 83577-2-PBS. Detection antibody: 83577-1-PBS. Standard: Ag2282. Range: 0.781-100 ng/mL.



Cytometric bead array standard curve of MP00568-2, GAR1 Recombinant Matched Antibody Pair, PBS Only. Capture antibody: 83577-3-PBS. Detection antibody: 83577-1-PBS. Standard: Ag2282. Range: 0.781-100 ng/mL.



Biolayer interferometry (BLI) kinetic assays of 83577-1-RR against Human GARI were performed. The affinity constant is below 1 pM.