

For Research Use Only

# INTS4 Recombinant antibody

Catalog Number: 83590-6-RR



## Basic Information

<b>Catalog Number:</b> 83590-6-RR	<b>GenBank Accession Number:</b> BC009995	<b>Purification Method:</b> Protein A purification
<b>Size:</b> 1000 ug/ml	<b>GeneID (NCBI):</b> 92105	<b>CloneNo.:</b> 240579F7
<b>Source:</b> Rabbit	<b>UNIPROT ID:</b> Q96HW7	<b>Recommended Dilutions:</b> WB 1:5000-1:50000 IHC 1:500-1:2000 IF/ICC 1:125-1:500
<b>Isotype:</b> IgG	<b>Full Name:</b> integrator complex subunit 4	
<b>Immunogen Catalog Number:</b> AG9116	<b>Calculated MW:</b> 963aa, 108 kDa; 505aa, 57 kDa	
	<b>Observed MW:</b> 108 kDa	

## Applications

**Tested Applications:**  
WB, IHC, IF/ICC, ELISA

**Species Specificity:**  
human, mouse

**Note-IHC: suggested antigen retrieval with TE buffer pH 9.0; (\*) Alternatively, antigen retrieval may be performed with citrate buffer pH 6.0**

**Positive Controls:**

**WB:** HepG2 cells, MCF-7 cells, Jurkat cells, HeLa cells, NIH/3T3 cells, mouse testis tissue

**IHC:** human ovary cancer tissue,

**IF/ICC:** HeLa cells, U2OS cells

## Background Information

Integrator complex subunit 4 (INTS4), a helical repeat protein, plays a key role in stabilizing nuclease domains and other components. INTS4 is a specific and conserved interaction partner of INTS9/11 heterodimer that does not interact with either subunit individually (PMID: 29471365). INTS4 plays a role in achieving a compact nuclease/pseudonuclease configuration resembling that observed for CPSF73/100 in the histone-processing machinery (PMID: 33548203).

## Storage

**Storage:**

Store at -20°C. Stable for one year after shipment.

**Storage Buffer:**

PBS with 0.02% sodium azide and 50% glycerol pH 7.3.

Aliquoting is unnecessary for -20°C storage

For technical support and original validation data for this product please contact:

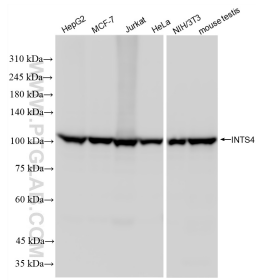
T: 4006900926

E: Proteintech-CN@ptglab.com

W: ptgcn.com

**This product is exclusively available under Proteintech Group brand and is not available to purchase from any other manufacturer.**

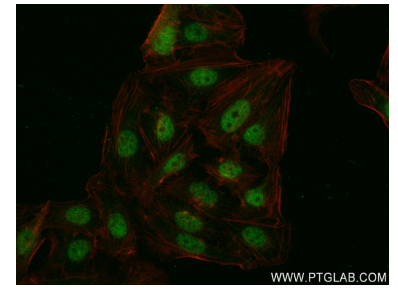
## Selected Validation Data



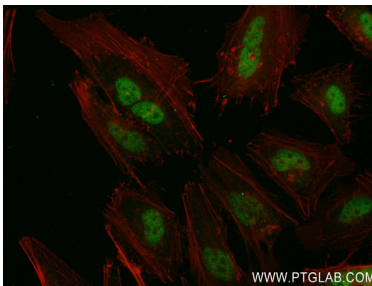
Various lysates were subjected to SDS PAGE followed by western blot with 83590-6-RR (INTS4 antibody) at dilution of 1:10000 incubated at room temperature for 1.5 hours.



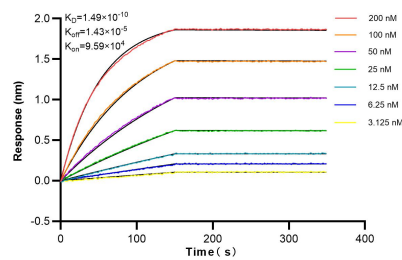
Immunohistochemical analysis of paraffin-embedded human ovary cancer tissue slide using 83590-6-RR (INTS4 antibody) at dilution of 1:1000 (under 20x lens). Heat mediated antigen retrieval with Tris-EDTA buffer (pH 9.0).



Immunofluorescent analysis of (4% PFA) fixed U2OS cells using INTS4 antibody (83590-6-RR, Clone: 240579F7) at dilution of 1:250 and CoraLite®488-Conjugated AffiniPure Goat Anti-Rabbit IgG(H+L) (SA00013-2).



Immunofluorescent analysis of (4% PFA) fixed HeLa cells using INTS4 antibody (83590-6-RR, Clone: 240579F7) at dilution of 1:250 and CoraLite®488-Conjugated AffiniPure Goat Anti-Rabbit IgG(H+L) (SA00013-2).



Biolayer interferometry (BLI) kinetic assays of 83590-6-RR against Human INTS4 were performed. The affinity constant is 0.149 nM.