

For Research Use Only

BARHL2 Recombinant antibody

Catalog Number: 83596-4-RR



Basic Information

Catalog Number: 83596-4-RR	GenBank Accession Number: BC126439	Purification Method: Protein A purification
Size: 1000 µg/ml	GeneID (NCBI): 343472	CloneNo.: 240558G8
Source: Rabbit	UNIPROT ID: Q9NY43	Recommended Dilutions: WB 1:500-1:2000 IF/ICC 1:125-1:500
Isotype: IgG	Full Name: BarH-like homeobox 2	
Immunogen Catalog Number: AG21156	Calculated MW: 387 aa, 42 kDa	
	Observed MW: 42 kDa	

Applications

Tested Applications: WB, IF/ICC, ELISA	Positive Controls:
Species Specificity: human, mouse, rat	WB : mouse cerebellum tissue, rat cerebellum tissue IF/ICC : HepG2 cells,

Background Information

BARHL2 also named as BarH like homeobox 2 is 279 amino acid protein, which contains 1 homeobox DNA-binding domain. BARHL2 localizes in nucleus and belongs to BAR homeobox family. BARHL2 as a transcription factor binds optimally to the DNA consensus sequence. Barx2 may differentially control the expression of L1 and other target genes during embryonic development. Barx2 is expressed in several smooth muscle-containing tissues, as well as skeletal muscle, brain, tongue and esophagus.

Storage

Storage:
Store at -20°C. Stable for one year after shipment.
Storage Buffer:
PBS with 0.02% sodium azide and 50% glycerol pH 7.3.
Aliquoting is unnecessary for -20°C storage

For technical support and original validation data for this product please contact:

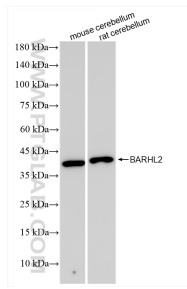
T: 4006900926

E: Proteintech-CN@ptglab.com

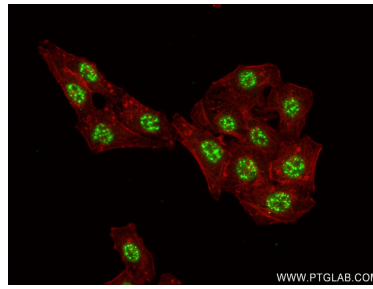
W: ptgcn.com

This product is exclusively available under Proteintech Group brand and is not available to purchase from any other manufacturer.

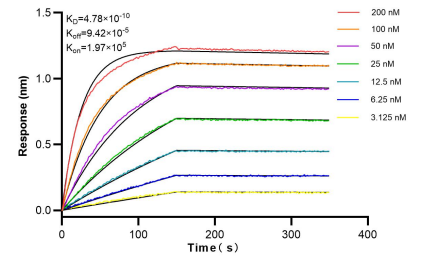
Selected Validation Data



mouse cerebellum tissue were subjected to SDS PAGE followed by western blot with 83596-4-RR (BARHL2 antibody) at dilution of 1:1000 incubated at room temperature for 1.5 hours.



Immunofluorescent analysis of (4% PFA) fixed HepG2 cells using BARHL2 antibody (83596-4-RR, Clone: 240558G8) at dilution of 1:250 and CoraLite®488-Conjugated AffiniPure Goat Anti-Rabbit IgG(H+L) (SA00013-2), CL594-Phalloidin (red).



Bi-layer interferometry (BLI) kinetic assays of 83596-4-RR against Human BARHL2 were performed. The affinity constant is 0.478 nM.