

For Research Use Only

Mouse Keap1 Recombinant antibody, PBS Only (Detector)

Catalog Number:83599-4-PBS



Basic Information

Catalog Number: 83599-4-PBS	GenBank Accession Number: NM_001110305	Purification Method: Protein A purification
Size: 1 mg/ml	GeneID (NCBI): 50868	CloneNo.: 240549H4
Source: Rabbit	UNIPROT ID: Q9Z2X8	
Isotype: IgG	Full Name: kelch-like ECH-associated protein 1	
Immunogen Catalog Number: AG35035	Calculated MW: 70 kDa	

Applications

Tested Applications:
Cytometric bead array, Sandwich ELISA, Indirect ELISA,
Sample test

Species Specificity:
mouse

Background Information

Storage

Storage:
Store at -80°C.
The product is shipped with ice packs. Upon receipt, store it immediately at -80°C

Storage Buffer:
PBS Only

For technical support and original validation data for this product please contact:

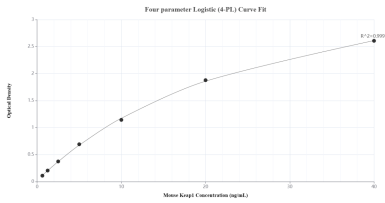
T: 4006900926

E: Proteintech-CN@ptglab.com

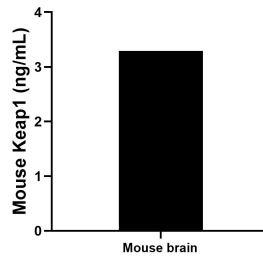
W: ptgcn.com

This product is exclusively available under Proteintech Group brand and is not available to purchase from any other manufacturer.

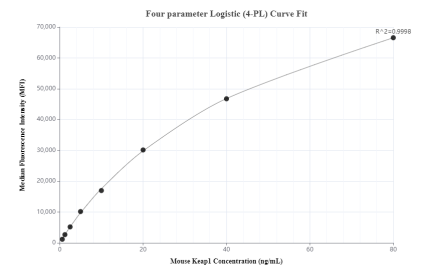
Selected Validation Data



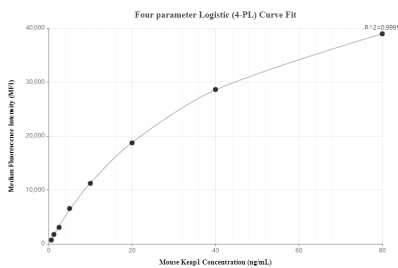
Sandwich ELISA standard curve of MP00586-4, Mouse Keap1 Recombinant Matched Antibody Pair - PBS only. 83599-5-PBS was coated to a plate as the capture antibody and incubated with serial dilutions of standard Ag35035. 83599-4-PBS was HRP conjugated as the detection antibody. Range: 0.625-40 ng/mL



The mean Keap1 concentration was determined to be 3.29 ng/mL in mouse brain cell extract based on a 1.60 mg/mL extract load.



Cytometric bead array standard curve of MP00586-1, MOUSE Keap1 Recombinant Matched Antibody Pair, PBS Only. Capture antibody: 83599-1-PBS. Detection antibody: 83599-4-PBS. Standard: Ag35035. Range: 0.625-80 ng/mL



Cytometric bead array standard curve of MP00586-3, MOUSE Keap1 Recombinant Matched Antibody Pair, PBS Only. Capture antibody: 83599-2-PBS. Detection antibody: 83599-4-PBS. Standard: Ag35035. Range: 0.625-80 ng/mL