

For Research Use Only

RUFY3 Recombinant antibody

Catalog Number: 83601-2-RR



Basic Information

Catalog Number: 83601-2-RR	GenBank Accession Number: BC051716	Purification Method: Protein A purification
Size: 1000 µg/ml	GeneID (NCBI): 22902	CloneNo.: 240519E7
Source: Rabbit	UNIPROT ID: Q7L099	Recommended Dilutions: WB 1:5000-1:50000
Isotype: IgG	Full Name: RUN and FYVE domain containing 3	
Immunogen Catalog Number: AG35558	Calculated MW: 53 kDa	
	Observed MW: 60 kDa	

Applications

Tested Applications: WB, FC (Intra), ELISA	Positive Controls: WB : Jurkat cells, SGC-7901 cells, HeLa cells, BGC-823 cells, mouse brain tissue, rat brain tissue
Species Specificity: human, mouse, rat	

Background Information

RUFY3 (RUN and FYVE domain-containing protein 3) was originally described as lacking part of the C-terminal CC2 and FYVE domains. The interaction of RUFY3 with the filamentous actin network through a complex formed together with Rap2 and Fascin 1 (FSCN1) is critical for axonogenesis and growth cone development (PMID: 37463962). RUFY3 also seems to play a crucial role in promoting cancer development (PMID: 34510031).

Storage

Storage:
Store at -20°C. Stable for one year after shipment.
Storage Buffer:
PBS with 0.02% sodium azide and 50% glycerol pH 7.3.
Aliquoting is unnecessary for -20°C storage

For technical support and original validation data for this product please contact:

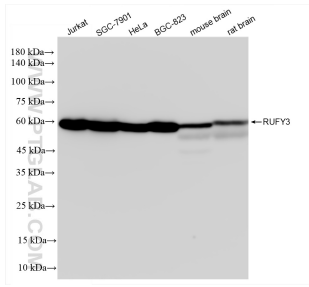
T: 4006900926

E: Proteintech-CN@ptglab.com

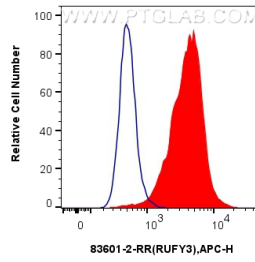
W: ptgcn.com

This product is exclusively available under Proteintech Group brand and is not available to purchase from any other manufacturer.

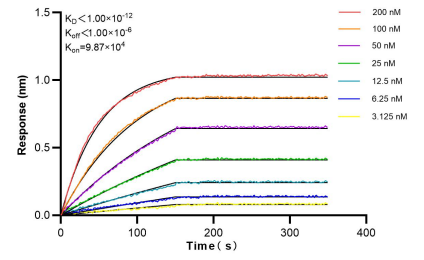
Selected Validation Data



Various lysates were subjected to SDS PAGE followed by western blot with 83601-2-RR (RUFY3 antibody) at dilution of 1:10000 incubated at room temperature for 1.5 hours.



1×10^6 A431 cells were intracellularly stained with 0.25 μ g RUFY3 Recombinant antibody (83601-2-RR, Clone:240519E7) and APC-Conjugated AffiniPure Goat Anti-Rabbit IgG(H+L)(red), or 0.25 μ g Isotype Control (blue). Cells were fixed with 4% PFA and permeabilized with Flow Cytometry Perm Buffer (PF00011-C).



Bioluminescence resonance energy transfer (BRET) kinetic assays of 83601-2-RR against Human RUFY3 were performed. The affinity constant is below 1 pM.