

For Research Use Only

Cryptochrome 1 Recombinant antibody

Catalog Number: 83602-5-RR



Basic Information

Catalog Number: 83602-5-RR	GenBank Accession Number: BC030519	Purification Method: Protein A purification
Size: 1000 ug/ml	GeneID (NCBI): 1407	CloneNo.: 240520B12
Source: Rabbit	UNIPROT ID: Q16526	Recommended Dilutions: WB 1:1000-1:8000
Isotype: IgG	Full Name: cryptochrome 1 (photolyase-like)	
Immunogen Catalog Number: AG4270	Calculated MW: 586 aa, 66 kDa	
	Observed MW: 60-66 kDa	

Applications

Tested Applications: WB, ELISA	Positive Controls: WB : HeLa cells, Y79 cells, HCT 116 cells
Species Specificity: human	

Background Information

Cryptochrome circadian clock 1 (CRY1) is a flavin adenine dinucleotide-binding protein with MW of 66 kDa. CRY1 is a key component of the circadian core oscillator complex, which regulates the circadian clock. CRY1 predominantly displays evening-time expression and serves as a strong repressor of morning-time elements (E box/E-prime box) when bound to the BMAL1 (ARNTL; 602550)/CLOCK (601851) complex (PubMed: 21236481).

Storage

Storage:
Store at -20°C. Stable for one year after shipment.
Storage Buffer:
PBS with 0.02% sodium azide and 50% glycerol pH 7.3.
Aliquoting is unnecessary for -20°C storage

For technical support and original validation data for this product please contact:

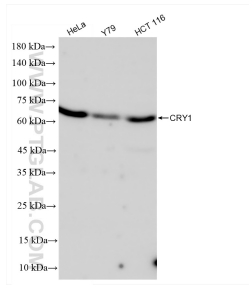
T: 4006900926

E: Proteintech-CN@ptglab.com

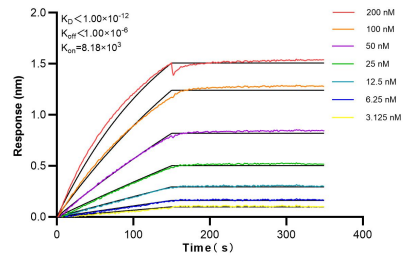
W: ptgcn.com

This product is exclusively available under Proteintech Group brand and is not available to purchase from any other manufacturer.

Selected Validation Data



Various lysates were subjected to SDS PAGE followed by western blot with 83602-5-RR (CRY1 antibody) at dilution of 1:4000 incubated at room temperature for 1.5 hours.



Biolayer interferometry (BLI) kinetic assays of 83602-5-RR against Human Cryptochrome 1 were performed. The affinity constant is below 1 pM.