

For Research Use Only

SFRS11 Recombinant antibody, PBS Only



Catalog Number: 83605-6-PBS

Basic Information

Catalog Number: 83605-6-PBS	GenBank Accession Number: BC040436	Purification Method: Protein A purification
Size: 1 mg/ml	GeneID (NCBI): 9295	CloneNo.: 240465B8
Source: Rabbit	UNIPROT ID: Q05519	
Isotype: IgG	Full Name: splicing factor, arginine/serine-rich 11	
Immunogen Catalog Number: AG24932	Calculated MW: 483 aa, 53 kDa	

Applications

Tested Applications:
WB, IF/ICC, FC (Intra), ELISA

Species Specificity:
human

Background Information

Storage

Storage:
Store at -80°C.
The product is shipped with ice packs. Upon receipt, store it immediately at -80°C

Storage Buffer:
PBS Only

For technical support and original validation data for this product please contact:

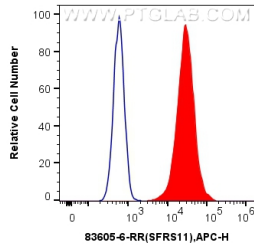
T: 4006900926

E: Proteintech-CN@ptglab.com

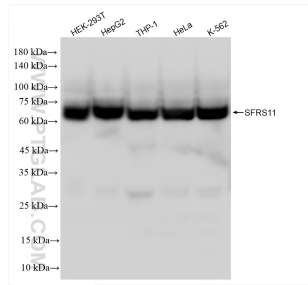
W: ptgcn.com

This product is exclusively available under Proteintech Group brand and is not available to purchase from any other manufacturer.

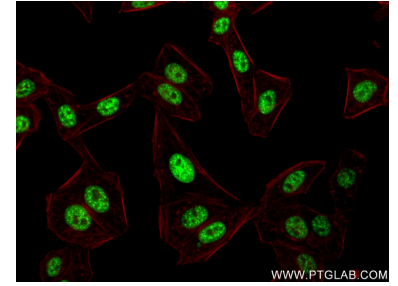
Selected Validation Data



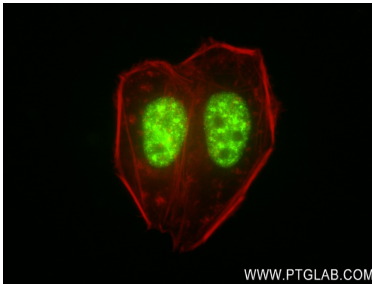
1x10⁶ HeLa cells were intracellularly stained with 0.25 ug SFRS11 Recombinant antibody (83605-6-RR, Clone:240465B8) and APC-Conjugated AffiniPure Goat Anti-Rabbit IgG(H+L)(red), or 0.25 ug Isotype Control (blue). Cells were fixed and permeabilized with Transcription Factor Staining Buffer Kit (PF00011). This data was developed using the same antibody clone with 83605-6-PBS in a different storage buffer formulation.



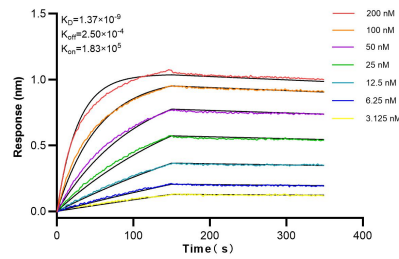
Various lysates were subjected to SDS PAGE followed by western blot with 83605-6-RR (SFRS11 antibody) at dilution of 1:10000 incubated at room temperature for 1.5 hours. This data was developed using the same antibody clone with 83605-6-PBS in a different storage buffer formulation.



Immunofluorescent analysis of (4% PFA) fixed HepG2 cells using SFRS11 antibody (83605-6-RR, Clone: 240465B8) at dilution of 1:250 and CoraLite@488-Conjugated AffiniPure Goat Anti-Rabbit IgG(H+L) (SA00013-2), CL594-Phalloidin (red). This data was developed using the same antibody clone with 83605-6-PBS in a different storage buffer formulation.



Immunofluorescent analysis of (4% PFA) fixed HepG2 cells using SFRS11 antibody (83605-6-RR, Clone: 240465B8) at dilution of 1:250 and CoraLite@488-Conjugated AffiniPure Goat Anti-Rabbit IgG(H+L) (SA00013-2), CL594-Phalloidin (red). This data was developed using the same antibody clone with 83605-6-PBS in a different storage buffer formulation.



Biolayer interferometry (BLI) kinetic assays of 83605-6-RR against Human SFRS11 were performed. The affinity constant is 1.37 nM.