

For Research Use Only

# SFRS11 Recombinant antibody

Catalog Number: 83605-6-RR



## Basic Information

<b>Catalog Number:</b> 83605-6-RR	<b>GenBank Accession Number:</b> BC040436	<b>Purification Method:</b> Protein A purification
<b>Size:</b> 1000 µg/ml	<b>GeneID (NCBI):</b> 9295	<b>CloneNo.:</b> 240465B8
<b>Source:</b> Rabbit	<b>UNIPROT ID:</b> Q05519	<b>Recommended Dilutions:</b> WB 1:5000-1:50000 IF/ICC 1:125-1:500
<b>Isotype:</b> IgG	<b>Full Name:</b> splicing factor, arginine/serine-rich 11	
<b>Immunogen Catalog Number:</b> AG24932	<b>Calculated MW:</b> 483 aa, 53 kDa	
	<b>Observed MW:</b> 68 kDa	

## Applications

<b>Tested Applications:</b> WB, IF/ICC, FC (Intra), ELISA	<b>Positive Controls:</b>
<b>Species Specificity:</b> human	<b>WB :</b> HEK-293T cells, HepG2 cells, THP-1 cells, HeLa cells, K-562 cells <b>IF/ICC :</b> HepG2 cells,

## Background Information

SRS11 (Serine/arginine-rich splicing factor 11) may function in pre-mRNA splicing. It is localized in the cell nucleus and can colocalize with spliceosome components.

## Storage

**Storage:**  
Store at -20°C. Stable for one year after shipment.  
**Storage Buffer:**  
PBS with 0.02% sodium azide and 50% glycerol pH 7.3.  
Aliquoting is unnecessary for -20°C storage

For technical support and original validation data for this product please contact:

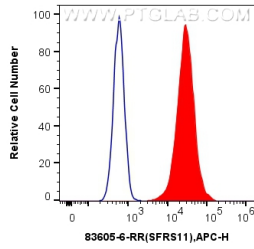
T: 4006900926

E: [Proteintech-CN@ptglab.com](mailto:Proteintech-CN@ptglab.com)

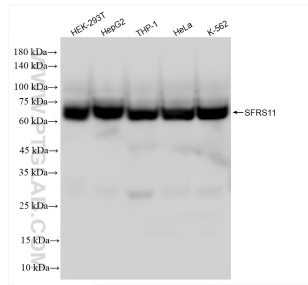
W: [ptgcn.com](http://ptgcn.com)

This product is exclusively available under Proteintech Group brand and is not available to purchase from any other manufacturer.

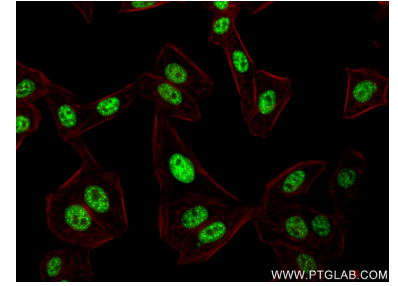
## Selected Validation Data



1x10<sup>6</sup> HeLa cells were intracellularly stained with 0.25 ug SFRS11 Recombinant antibody (83605-6-RR, Clone:240465B8) and APC-Conjugated AffiniPure Goat Anti-Rabbit IgG(H+L)(red), or 0.25 ug Isotype Control (blue). Cells were fixed and permeabilized with Transcription Factor Staining Buffer Kit (PF00011).



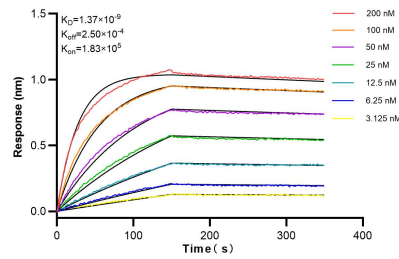
Various lysates were subjected to SDS PAGE followed by western blot with 83605-6-RR (SFRS11 antibody) at dilution of 1:10000 incubated at room temperature for 1.5 hours.



Immunofluorescent analysis of (4% PFA) fixed HepG2 cells using SFRS11 antibody (83605-6-RR, Clone: 240465B8) at dilution of 1:250 and CoraLite@488-Conjugated AffiniPure Goat Anti-Rabbit IgG(H+L) (SA00013-2), CL594-Phalloidin (red).



Immunofluorescent analysis of (4% PFA) fixed HepG2 cells using SFRS11 antibody (83605-6-RR, Clone: 240465B8) at dilution of 1:250 and CoraLite@488-Conjugated AffiniPure Goat Anti-Rabbit IgG(H+L) (SA00013-2), CL594-Phalloidin (red).



Biolayer interferometry (BLI) kinetic assays of 83605-6-RR against Human SFRS11 were performed. The affinity constant is 1.37 nM.