

For Research Use Only

# ATM Recombinant antibody, PBS Only (Capture)

Catalog Number:83608-6-PBS



## Basic Information

|                                      |   |  |
|--------------------------------------|---|--|
| Catalog Number:<br>83608-6-PBS       | GenBank Accession Number:<br>BC137169       | Purification Method:<br>Protein A purification |
| Size:<br>1 mg/ml                     | GeneID (NCBI):<br>472                       | CloneNo.:<br>240560F4                          |
| Source:<br>Rabbit                    | UNIPROT ID:<br>Q13315                       |  |
| Isotype:<br>IgG                      | Full Name:<br>ataxia telangiectasia mutated |  |
| Immunogen Catalog Number:<br>AG25920 |   |  |

## Applications

**Tested Applications:**  
Sandwich ELISA, Indirect ELISA, Sample test

**Species Specificity:**  
human

## Background Information

### Storage

**Storage:**  
Store at -80°C.  
**The product is shipped with ice packs. Upon receipt, store it immediately at -80°C**

**Storage Buffer:**  
PBS Only

For technical support and original validation data for this product please contact:

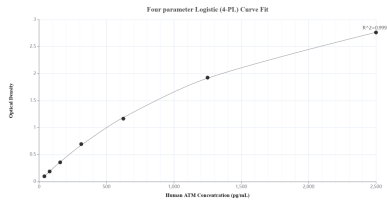
T: 4006900926

E: [Proteintech-CN@ptglab.com](mailto:Proteintech-CN@ptglab.com)

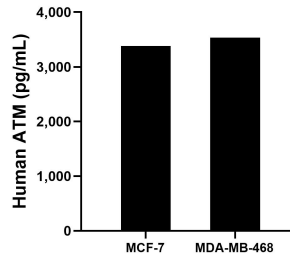
W: [ptgcn.com](http://ptgcn.com)

**This product is exclusively available under Proteintech Group brand and is not available to purchase from any other manufacturer.**

## Selected Validation Data



Sandwich ELISA standard curve of MP00592-4, Human ATM Recombinant Matched Antibody Pair - PBS only. 83608-6-PBS was coated to a plate as the capture antibody and incubated with serial dilutions of standard Ag25920. 83608-4-PBS was HRP conjugated as the detection antibody. Range: 39.1-2500 pg/mL



The mean ATM concentration was determined to be 3,383.80 pg/mL in MCF-7 cell extract based on a 1.20 mg/mL extract load and 3,536.69 pg/mL in MDA-MB-468 cell extract based on a 3.20 mg/mL extract load.