

For Research Use Only

Dystrophin Recombinant antibody

Catalog Number:83609-6-RR



Basic Information

Catalog Number: 83609-6-RR	GenBank Accession Number: BC028720	Purification Method: Protein A purification
Size: 1000 ug/ml	GeneID (NCBI): 1756	CloneNo.: 240567C4
Source: Rabbit	UNIPROT ID: P11532	Recommended Dilutions: IHC 1:50-1:500 IF-P 1:200-1:800
Isotype: IgG	Full Name: dystrophin	
Immunogen Catalog Number: AG3408	Calculated MW: 3685 aa, 427 kDa	

Applications

Tested Applications:
IHC, IF-P, FC (Intra), ELISA

Species Specificity:
human, mouse, rat

Positive Controls:
IHC : mouse skeletal muscle tissue,
IF-P : rat brain tissue,

Note-IHC: suggested antigen retrieval with TE buffer pH 9.0; (*) Alternatively, antigen retrieval may be performed with citrate buffer pH 6.0

Background Information

Dystrophin (DMD or BMD) is a large muscle protein whose mutations cause Duchenne muscular dystrophy (DMD) and Becker muscular dystrophy (BMD), the childhood neuromuscular disorders that result in progressive muscle weakness, respiratory difficulties and cardiovascular dysfunction. Dystrophin is a crucial component of the dystrophin-glycoprotein complex which is essential for muscle membrane integrity and stability. Dystrophin is located on the cytoplasmic face of the sarcolemma and connects the cytoskeletal network to the sarcolemma and extracellular matrix. Multiple isoforms of dystrophin exist due to the alternative splicing, with a wide range of MW (69-72, 110-143, 271, 426 kDa). Most tissues contain transcripts of several isoforms.

Storage

Storage:
Store at -20°C. Stable for one year after shipment.

Storage Buffer:
PBS with 0.02% sodium azide and 50% glycerol pH 7.3.

Aliquoting is unnecessary for -20°C storage

For technical support and original validation data for this product please contact:

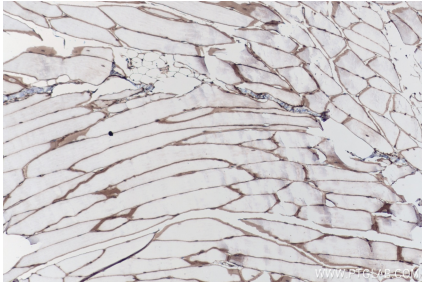
T: 4006900926

E: Proteintech-CN@ptglab.com

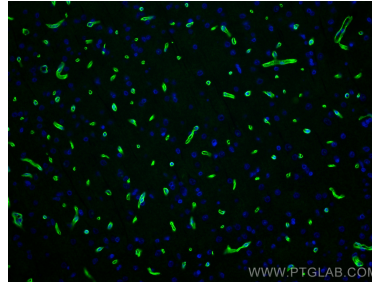
W: ptgcn.com

This product is exclusively available under Proteintech Group brand and is not available to purchase from any other manufacturer.

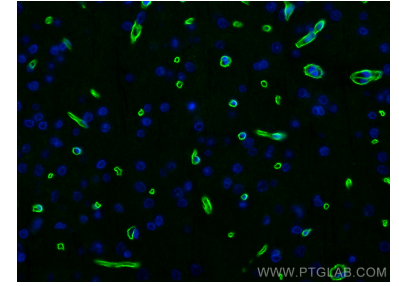
Selected Validation Data



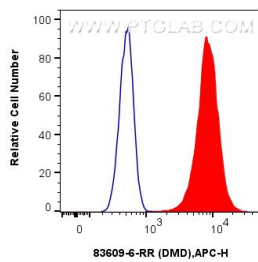
Immunohistochemical analysis of paraffin-embedded mouse skeletal muscle tissue slide using 83609-6-RR (Dystrophin antibody) at dilution of 1:200 (under 10x lens). Heat mediated antigen retrieval with Tris-EDTA buffer (pH 9.0).



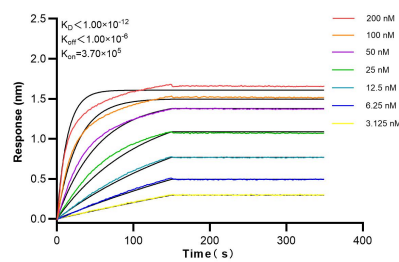
Immunofluorescent analysis of (4% PFA) fixed paraffin-embedded rat brain tissue using Dystrophin antibody (83609-6-RR, Clone: 240567C4) at dilution of 1:400 and Multi-rAb CoraLite® Plus 488-Goat Anti-Rabbit Recombinant Secondary Antibody (H+L) (RGAR002). Heat mediated antigen retrieval with Tris-EDTA buffer (pH 9.0).



Immunofluorescent analysis of (4% PFA) fixed paraffin-embedded rat brain tissue using Dystrophin antibody (83609-6-RR, Clone: 240567C4) at dilution of 1:400 and Multi-rAb CoraLite® Plus 488-Goat Anti-Rabbit Recombinant Secondary Antibody (H+L) (RGAR002). Heat mediated antigen retrieval with Tris-EDTA buffer (pH 9.0).



1×10^6 Hep2 cells were intracellularly stained with 0.25 μ g DMD Recombinant antibody (83609-6-RR, Clone:240567C4) and APC-Conjugated AffiniPure Goat Anti-Rabbit IgG(H+L)(red), or 0.25 μ g Isotype Control (blue). Cells were fixed with 4% PFA and permeabilized with Flow Cytometry Perm Buffer (PF00011-C).



Biolayer interferometry (BLI) kinetic assays of 83609-6-RR against Human Dystrophin were performed. The affinity constant is below 1 pM.