

For Research Use Only

STEAP2 Recombinant antibody, PBS Only (Capture)

Catalog Number:83611-3-PBS



Basic Information

Catalog Number: 83611-3-PBS	GenBank Accession Number: NM_152999	Purification Method: Protein A purification
Size: 1 mg/ml	GeneID (NCBI): 261729	CloneNo.: 240611E5
Source: Rabbit	UNIPROT ID: Q8NFT2	
Isotype: IgG	Full Name: six transmembrane epithelial antigen of the prostate 2	
	Calculated MW: 56 kDa	
	Observed MW: 48-52 kDa	

Applications

Tested Applications:
WB, IF/ICC, FC (Intra), Cytometric bead array, Indirect ELISA

Species Specificity:
human

Background Information

STEAP2, also named as PCANAP1 and STAMP1, belongs to the STEAP family. It is a metalloendopeptidase that has the ability to reduce both Fe³⁺ to Fe²⁺ and Cu²⁺ to Cu¹⁺. STEAP2 uses NAD⁺ as acceptor.

Storage

Storage:
Store at -80°C.
The product is shipped with ice packs. Upon receipt, store it immediately at -80°C

Storage Buffer:
PBS Only

For technical support and original validation data for this product please contact:

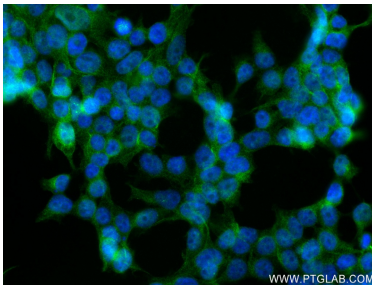
T: 4006900926

E: Proteintech-CN@ptglab.com

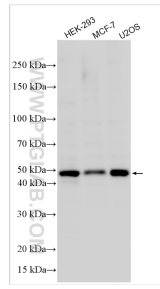
W: ptgcn.com

This product is exclusively available under Proteintech Group brand and is not available to purchase from any other manufacturer.

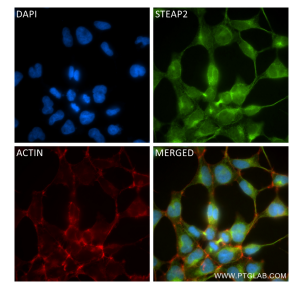
Selected Validation Data



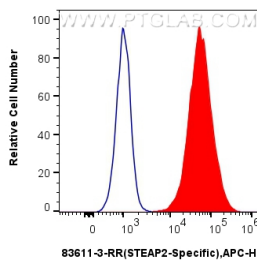
Immunofluorescent analysis of (4% PFA) fixed HEK-293 cells using STEAP2-Specific antibody (83611-3-RR, Clone: 240611E5) at dilution of 1:250 and CoraLite®488-Conjugated AffiniPure Goat Anti-Rabbit IgG(H+L) (SA00013-2). This data was developed using the same antibody clone with 83611-3-PBS in a different storage buffer formulation.



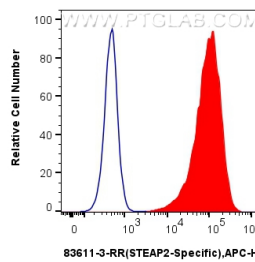
Various lysates were subjected to SDS PAGE followed by western blot with 83611-3-RR (STEAP2 antibody) at dilution of 1:1000 incubated at room temperature for 1.5 hours. This data was developed using the same antibody clone with 83611-3-PBS in a different storage buffer formulation.



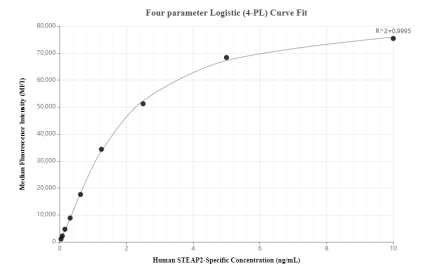
Immunofluorescent analysis of (4% PFA) fixed HEK-293 cells using STEAP2 antibody (83611-3-RR, Clone: 240611E5) at dilution of 1:250 and CoraLite®488-Conjugated Goat Anti-Rabbit IgG(H+L) (SA00013-2), CL594-Phalloidin (red). This data was developed using the same antibody clone with 83611-3-PBS in a different storage buffer formulation.



1x10⁶ A549 cells were intracellularly stained with 0.25 ug STEAP2-Specific Recombinant antibody (83611-3-RR, Clone:240611E5) and APC-Conjugated AffiniPure Goat Anti-Rabbit IgG(H+L) (red), or 0.25 ug Isotype Control (blue). Cells were fixed with 4% PFA and permeabilized with Flow Cytometry Perm Buffer (PF00011-C). This data was developed using the same antibody clone with 83611-3-PBS in a different storage buffer formulation.



1x10⁶ HEK-293 cells were intracellularly stained with 0.25 ug STEAP2-Specific Recombinant antibody (83611-3-RR, Clone:240611E5) and APC-Conjugated AffiniPure Goat Anti-Rabbit IgG(H+L) (red), or 0.25 ug Isotype Control (blue). Cells were fixed with 4% PFA and permeabilized with Flow Cytometry Perm Buffer (PF00011-C). This data was developed using the same antibody clone with 83611-3-PBS in a different storage buffer formulation.



Cytometric bead array standard curve of MP00600-3, STEAP2-Specific Recombinant Matched Antibody Pair, PBS Only. Capture antibody: 83611-3-PBS. Detection antibody: 83611-5-PBS. Standard: SY00725. Range: 0.039-10 ng/mL.