

For Research Use Only

CUL3 Recombinant antibody, PBS Only (Capture)

Catalog Number:83619-7-PBS



Basic Information

Catalog Number: 83619-7-PBS	GenBank Accession Number: BC039598	Purification Method: Protein A purification
Size: 1 mg/ml	GeneID (NCBI): 8452	CloneNo.: 240534A8
Source: Rabbit	UNIPROT ID: Q13618	
Isotype: IgG	Full Name: cullin 3	
Immunogen Catalog Number: AG1555	Calculated MW: 89 kDa	

Applications

Tested Applications:
Sandwich ELISA, Indirect ELISA, Sample test

Species Specificity:
human

Background Information

Storage

Storage:
Store at -80°C.
The product is shipped with ice packs. Upon receipt, store it immediately at -80°C

Storage Buffer:
PBS Only

For technical support and original validation data for this product please contact:

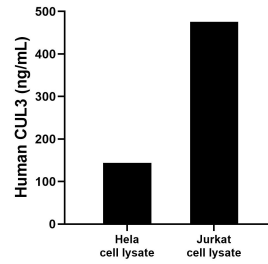
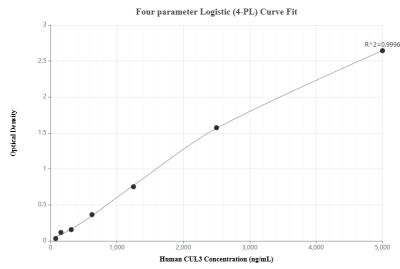
T: 4006900926

E: Proteintech-CN@ptglab.com

W: ptgcn.com

This product is exclusively available under Proteintech Group brand and is not available to purchase from any other manufacturer.

Selected Validation Data



Sandwich ELISA standard curve of MP00599-4, Human CUL3 Recombinant Matched Antibody Pair - PBS only. 83619-7-PBS was coated to a plate as the capture antibody and incubated with serial dilutions of standard Ag1555. 83619-1-PBS was HRP conjugated as the detection antibody. Range: 1.25-80 ng/mL

HeLa and Jurkat cell lysates were measured. The human CUL3 concentration of detected samples was determined to be 144.2 ng/mL (based on a 1.2 mg/mL extract load) in HeLa cell lysate and 475.5 ng/mL (based on a 1.0 mg/mL extract load) in Jurkat cell lysate.