

For Research Use Only

# MTMR15 Recombinant antibody, PBS Only

Catalog Number:83622-6-PBS



## Basic Information

<b>Catalog Number:</b> 83622-6-PBS	<b>GenBank Accession Number:</b> BC047882	<b>Purification Method:</b> Protein A purification
<b>Size:</b> 1 mg/ml	<b>GeneID (NCBI):</b> 22909	<b>CloneNo.:</b> 240629E4
<b>Source:</b> Rabbit	<b>UNIPROT ID:</b> Q9Y2M0	
<b>Isotype:</b> IgG	<b>Full Name:</b> myotubularin related protein 15	
<b>Immunogen Catalog Number:</b> AG11651	<b>Calculated MW:</b> 60 kDa, 114 kDa	

## Applications

**Tested Applications:**  
FC (Intra), Indirect ELISA

**Species Specificity:**  
human

## Background Information

MTMR15, also named as FAN1 and KIAA1018, is a nuclease required for the repair of DNA interstrand cross-links (ICL) recruited at sites of DNA damage by monoubiquitinated FANCD2. It is specifically involved in repair of ICL-induced DNA breaks by being required for efficient homologous recombination, probably in the resolution of homologous recombination intermediates. MTMR15 has some isoforms with MW 114 kDa and 60 kDa. The MW will be migrated to 120-140 kDa and 63-68 kDa with modification.

## Storage

**Storage:**  
Store at -80°C.  
**The product is shipped with ice packs. Upon receipt, store it immediately at -80°C**

**Storage Buffer:**  
PBS Only

For technical support and original validation data for this product please contact:

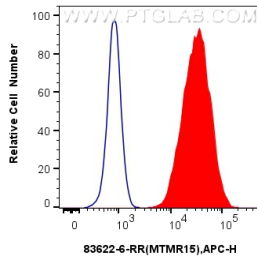
T: 4006900926

E: [Proteintech-CN@ptglab.com](mailto:Proteintech-CN@ptglab.com)

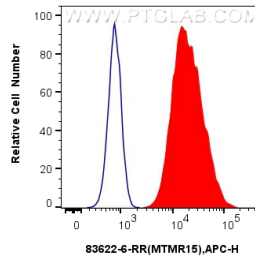
W: [ptgcn.com](http://ptgcn.com)

**This product is exclusively available under Proteintech Group brand and is not available to purchase from any other manufacturer.**

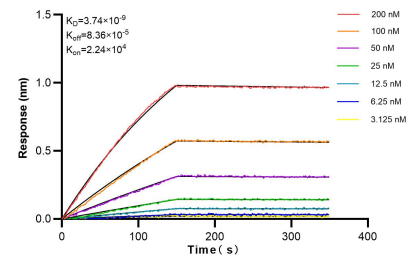
## Selected Validation Data



1x10<sup>6</sup> K-562 cells were intracellularly stained with 0.25 ug Mtmr15 Recombinant Antibody (83622-6-RR, Clone:240629E4) (red), or 0.25 ug Isotype Control (blue) and APC-Conjugated Goat Anti-Rabbit IgG(H+L). Cells were fixed and permeabilized with Transcription Factor Staining Buffer Kit (PF00011). This data was developed using the same antibody clone with 83622-6-PBS in a different storage buffer formulation.



1x10<sup>6</sup> A431 cells were intracellularly stained with 0.25 ug Mtmr15 Recombinant Antibody (83622-6-RR, Clone:240629E4) (red), or 0.25 ug Isotype Control (blue) and APC-Conjugated Goat Anti-Rabbit IgG(H+L). Cells were fixed and permeabilized with Transcription Factor Staining Buffer Kit (PF00011). This data was developed using the same antibody clone with 83622-6-PBS in a different storage buffer formulation.



Bi-layer interferometry (BLI) kinetic assays of 83622-6-RR against Human MTMR15 were performed. The affinity constant is 3.74 nM.