

For Research Use Only

ATP6V1E1 Recombinant antibody

Catalog Number:83636-6-RR



Basic Information

Catalog Number: 83636-6-RR	GenBank Accession Number: BC004443	Purification Method: Protein A purification
Size: 1000 ug/ml	GeneID (NCBI): 529	CloneNo.: 240584G12
Source: Rabbit	UNIPROT ID: P36543	Recommended Dilutions: WB 1:1000-1:4000 IHC 1:50-1:500
Isotype: IgG	Full Name: ATPase, H ⁺ transporting, lysosomal 31kDa, V1 subunit E1	
Immunogen Catalog Number: AG7399	Calculated MW: 26 kDa	
	Observed MW: 31 kDa	

Applications

Tested Applications:

WB, IHC, ELISA

Species Specificity:

human, rat

Note-IHC: suggested antigen retrieval with TE buffer pH 9.0; (*) Alternatively, antigen retrieval may be performed with citrate buffer pH 6.0

Positive Controls:

WB : HepG2 cells, U2OS cells, rat brain tissue

IHC : human ovary cancer tissue,

Background Information

ATP6V1E1, also named as ATP6E, ATP6E2 and p31, belongs to the V-ATPase E subunit family. It is a subunit of the peripheral V1 complex of vacuolar ATPase essential for assembly or catalytic function. V-ATPase is responsible for acidifying a variety of intracellular compartments in eukaryotic cells. V-ATPase and the lack of mycobacterial phagosome acidification are directly attributed to the Mtb protein tyrosine phosphatase PtpA.

Storage

Storage:

Store at -20°C. Stable for one year after shipment.

Storage Buffer:

PBS with 0.02% sodium azide and 50% glycerol pH 7.3.

Aliquoting is unnecessary for -20°C storage

For technical support and original validation data for this product please contact:

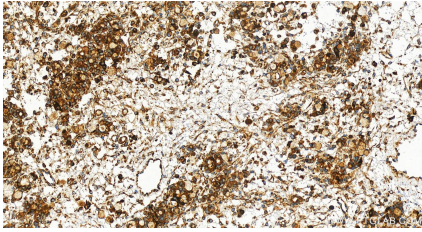
T: 4006900926

E: Proteintech-CN@ptglab.com

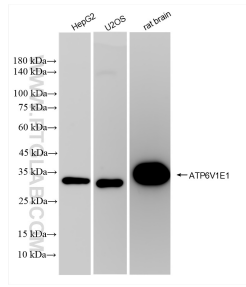
W: ptgcn.com

This product is exclusively available under Proteintech Group brand and is not available to purchase from any other manufacturer.

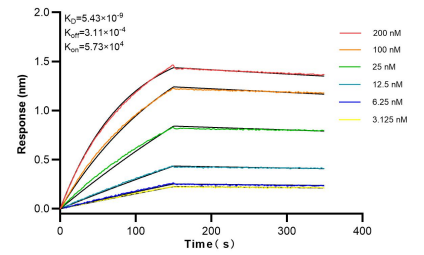
Selected Validation Data



Immunohistochemical analysis of paraffin-embedded human ovary cancer tissue slide using 83636-6-RR (ATP6V1E1 antibody) at dilution of 1:200 (under 20x lens). Heat mediated antigen retrieval with Tris-EDTA buffer (pH 9.0).



Various lysates were subjected to SDS PAGE followed by western blot with 83636-6-RR (ATP6V1E1 antibody) at dilution of 1:2000 incubated at room temperature for 1.5 hours.



Bi-layer interferometry (BLI) kinetic assays of 83636-6-RR against Human ATP6V1E1 were performed. The affinity constant is 5.43 nM.