

For Research Use Only

# RCN1 Recombinant antibody, PBS Only (Detector)



Catalog Number: 83638-3-PBS

## Basic Information

|                                      |  |  |
|--------------------------------------|--|--|
| Catalog Number:<br>83638-3-PBS       | GenBank Accession Number:<br>BC010120                          | Purification Method:<br>Protein A purification |
| Size:<br>1 mg/ml                     | GeneID (NCBI):<br>5954   | CloneNo.:<br>240473E9                          |
| Source:<br>Rabbit                    | UNIPROT ID:<br>Q15293  |  |
| Isotype:<br>IgG                      | Full Name:<br>reticulocalbin 1, EF-hand calcium binding domain |  |
| Immunogen Catalog Number:<br>AG13256 | Calculated MW:<br>39 kDa                                       |  |

## Applications

**Tested Applications:**  
WB, IF/ICC, Cytometric bead array, Indirect ELISA

**Species Specificity:**  
human

## Background Information

### Storage

**Storage:**  
Store at -80°C.  
**The product is shipped with ice packs. Upon receipt, store it immediately at -80°C**

**Storage Buffer:**  
PBS Only

For technical support and original validation data for this product please contact:

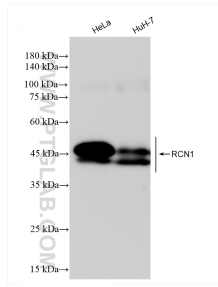
T: 4006900926

E: [Proteintech-CN@ptglab.com](mailto:Proteintech-CN@ptglab.com)

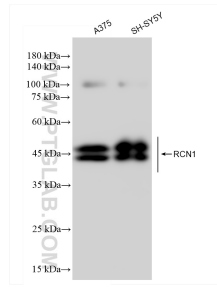
W: [ptgcn.com](http://ptgcn.com)

**This product is exclusively available under Proteintech Group brand and is not available to purchase from any other manufacturer.**

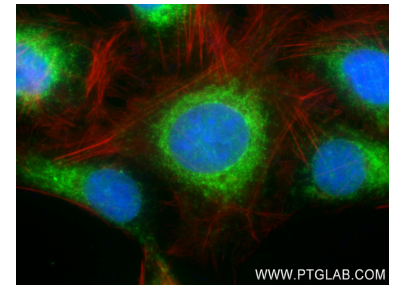
## Selected Validation Data



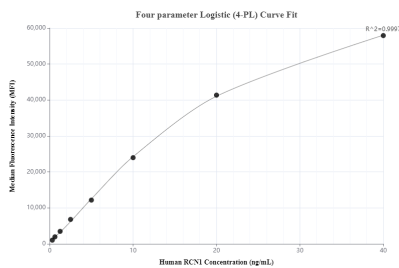
Various lysates were subjected to SDS PAGE followed by western blot with 83638-3-RR (RCN1 antibody) at dilution of 1:5000 incubated at room temperature for 1.5 hours. This data was developed using the same antibody clone with 83638-3-PBS in a different storage buffer formulation.



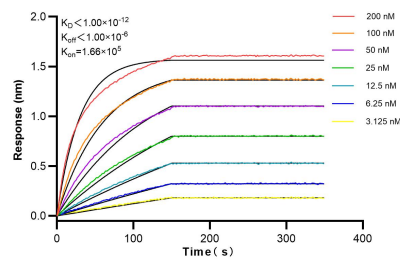
Various lysates were subjected to SDS PAGE followed by western blot with 83638-3-RR (RCN1 antibody) at dilution of 1:5000 incubated at room temperature for 1.5 hours. This data was developed using the same antibody clone with 83638-3-PBS in a different storage buffer formulation.



Immunofluorescent analysis of (4% PFA) fixed U2OS cells using RCN1 antibody (83638-3-RR, Clone: 240473E9) at dilution of 1:250 and CoraLite®488-Conjugated AffiniPure Goat Anti-Rabbit IgG(H+L) (SA00013-2), CL594-Phalloidin (red). This data was developed using the same antibody clone with 83638-3-PBS in a different storage buffer formulation.



Cytometric bead array standard curve of MP00637-3, RCN1 Recombinant Matched Antibody Pair, PBS Only. Capture antibody: 83638-4-PBS. Detection antibody: 83638-3-PBS. Standard: Ag13256. Range: 0.313-40 ng/mL



Biolayer interferometry (BLI) kinetic assays of 83638-3-RR against Human RCN1 were performed. The affinity constant is below 1 pM.