

For Research Use Only

RCN1 Recombinant antibody

Catalog Number: 83638-3-RR



Basic Information

Catalog Number: 83638-3-RR	GenBank Accession Number: BC010120	Purification Method: Protein A purification
Size: 1000 ug/ml	GeneID (NCBI): 5954	CloneNo.: 240473E9
Source: Rabbit	UNIPROT ID: Q15293	Recommended Dilutions: WB 1:2000-1:10000 IF/ICC 1:125-1:500
Isotype: IgG	Full Name: reticulocalbin 1, EF-hand calcium binding domain	
Immunogen Catalog Number: AG13256	Calculated MW: 39 kDa	
	Observed MW: 44-46 kDa	

Applications

Tested Applications: WB, IF/ICC, FC (Intra), ELISA	Positive Controls: WB : HeLa cells, A375 cells, SH-SY5Y cells, HuH-7 cells
Species Specificity: human	IF/ICC : U2OS cells,

Background Information

Reticulocalbin-1 (RCN1) belongs to the CREC family. Reticulocalbin - 1, an endoplasmic reticulum protein, plays a crucial role in calcium homeostasis and inhibits ER stress - induced apoptosis (PMID: 28319095). Its main functions include maintaining intracellular homeostasis and regulating cell proliferation and apoptosis, and it plays an important role in the development of various tumours (PMID: 38057406). RCN1 is expressed aberrantly and at a high level in various tumors, including acute myeloid leukemia (AML) (PMID: 37746742). In multiple cancers, such as glioblastoma, non - small cell lung cancer, renal cell carcinoma, hepatocellular carcinoma, and oral squamous cell carcinoma, the overexpression of RCN1 has been observed indicating its involvement in tumorigenesis and invasion (PMID: 30172915, PMID: 34722631).

Storage

Storage:
Store at -20°C. Stable for one year after shipment.
Storage Buffer:
PBS with 0.02% sodium azide and 50% glycerol pH 7.3.
Aliquoting is unnecessary for -20°C storage

For technical support and original validation data for this product please contact:

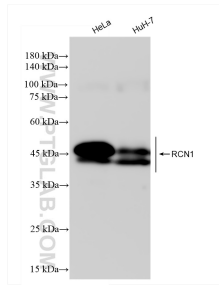
T: 4006900926

E: Proteintech-CN@ptglab.com

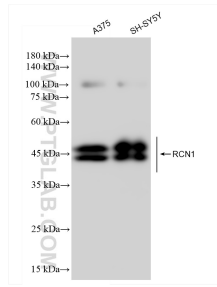
W: ptgcn.com

This product is exclusively available under Proteintech Group brand and is not available to purchase from any other manufacturer.

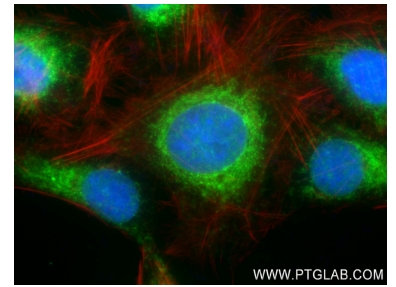
Selected Validation Data



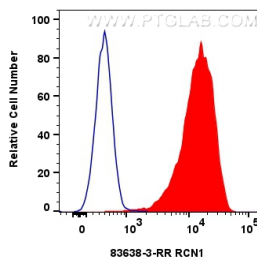
Various lysates were subjected to SDS PAGE followed by western blot with 83638-3-RR (RCN1 antibody) at dilution of 1:5000 incubated at room temperature for 1.5 hours.



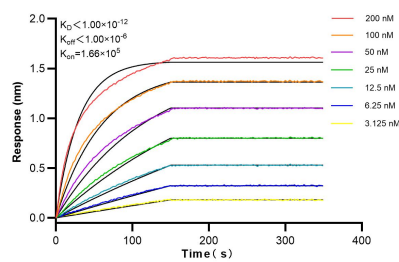
Various lysates were subjected to SDS PAGE followed by western blot with 83638-3-RR (RCN1 antibody) at dilution of 1:5000 incubated at room temperature for 1.5 hours.



Immunofluorescent analysis of (4% PFA) fixed U2OS cells using RCN1 antibody (83638-3-RR, Clone: 240473E9) at dilution of 1:250 and CoraLite®488-Conjugated AffiniPure Goat Anti-Rabbit IgG(H+L) (SA00013-2), CL594-Phalloidin (red).



1×10^6 HeLa cells were intracellularly stained with 0.25 μ g RCN1 Recombinant antibody (83638-3-RR, Clone:240473E9) and CoraLite®488-Conjugated Goat Anti-Rabbit IgG(H+L) (SA00013-2)(red), or 0.25 μ g Control Antibody (30000-0-AP) (blue). Cells were fixed with 4% PFA and permeabilized with Flow Cytometry Perm Buffer (PF00011-C).



Biolayer interferometry (BLI) kinetic assays of 83638-3-RR against Human RCN1 were performed. The affinity constant is below 1 pM.