

For Research Use Only

KCND3 Recombinant antibody, PBS Only (Detector)

Catalog Number:83640-5-PBS



Basic Information

Catalog Number:

83640-5-PBS

Size:

1 mg/ml

Source:

Rabbit

Isotype:

IgG

Immunogen Catalog Number:

AG22183

GenBank Accession Number:

BC113477

GeneID (NCBI):

3752

UNIPROT ID:

Q9UK17

Full Name:

potassium voltage-gated channel,
Shal-related subfamily, member 3

Calculated MW:

655 aa, 73 kDa

Purification Method:

Protein A purification

CloneNo.:

240578F12

Applications

Tested Applications:

WB, Cytometric bead array, Indirect ELISA

Species Specificity:

human, rat

Background Information

Storage

Storage:

Store at -80°C.

The product is shipped with ice packs. Upon receipt, store it immediately at -80°C

Storage Buffer:

PBS Only

For technical support and original validation data for this product please contact:

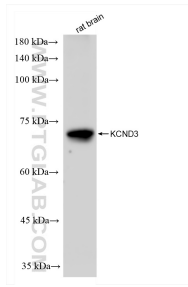
T: 4006900926

E: Proteintech-CN@ptglab.com

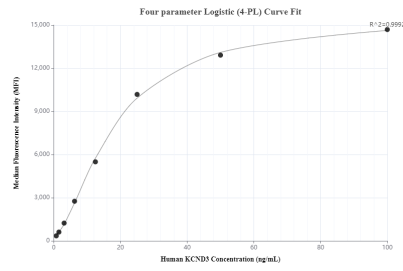
W: ptgcn.com

This product is exclusively available under Proteintech Group brand and is not available to purchase from any other manufacturer.

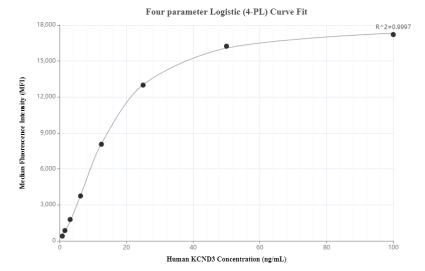
Selected Validation Data



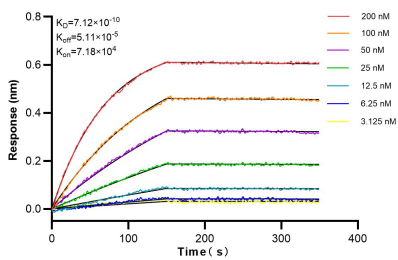
rat brain tissue were subjected to SDS PAGE followed by western blot with 83640-5-RR (KCND3 antibody) at dilution of 1:1000 incubated at room temperature for 1.5 hours. This data was developed using the same antibody clone with 83640-5-PBS in a different storage buffer formulation.



Cytometric bead array standard curve of MP00616-2, KCND3 Recombinant Matched Antibody Pair, PBS Only. Capture antibody: 83640-1-PBS. Detection antibody: 83640-5-PBS. Standard: Ag22183. Range: 0.78-100 ng/mL



Cytometric bead array standard curve of MP00616-3, KCND3 Recombinant Matched Antibody Pair, PBS Only. Capture antibody: 83640-3-PBS. Detection antibody: 83640-5-PBS. Standard: Ag22183. Range: 0.78-100 ng/mL



Bi-layer interferometry (BLI) kinetic assays of 83640-5-RR against Human KCND3 were performed. The affinity constant is 0.712 nM.