

For Research Use Only

MNT Recombinant antibody, PBS Only (Capture)

Catalog Number: 83648-1-PBS



Basic Information

Catalog Number: 83648-1-PBS	GenBank Accession Number: BC117563	Purification Method: Protein A purification
Size: 1 mg/ml	GeneID (NCBI): 4335	CloneNo.: 240550A10
Source: Rabbit	UNIPROT ID: Q99583	
Isotype: IgG	Full Name: MAX binding protein	
Immunogen Catalog Number: AG34529	Calculated MW: 582 aa, 62 kDa	

Applications

Tested Applications:
WB, FC (Intra), Cytometric bead array, Sandwich ELISA,
Indirect ELISA, Sample test

Species Specificity:
human, rat

Background Information

Storage

Storage:
Store at -80°C.
The product is shipped with ice packs. Upon receipt, store it immediately at -80°C

Storage Buffer:
PBS Only

For technical support and original validation data for this product please contact:

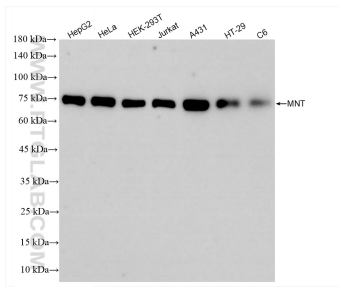
T: 4006900926

E: Proteintech-CN@ptglab.com

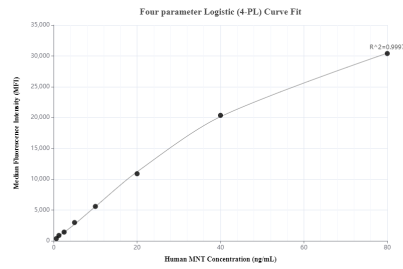
W: ptgcn.com

This product is exclusively available under Proteintech Group brand and is not available to purchase from any other manufacturer.

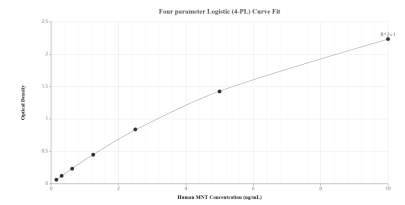
Selected Validation Data



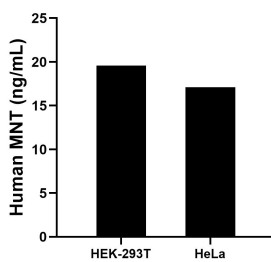
Various lysates were subjected to SDS PAGE followed by western blot with 83648-1-RR (MNT antibody) at dilution of 1:10000 incubated at room temperature for 1.5 hours. This data was developed using the same antibody clone with 83648-1-PBS in a different storage buffer formulation.



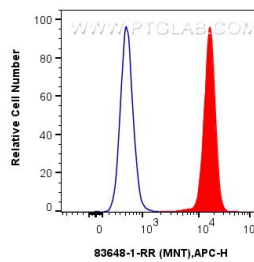
Cytometric bead array standard curve of MP00617-1, MNT Recombinant Matched Antibody Pair, PBS Only. Capture antibody: 83648-1-PBS. Detection antibody: 83648-3-PBS. Standard: Ag34529. Range: 0.625-80 ng/mL



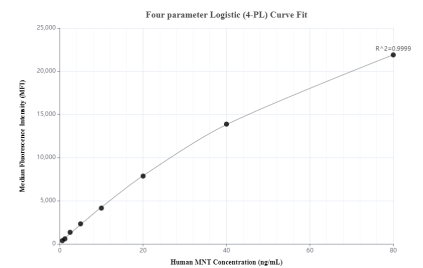
Sandwich ELISA standard curve of MP00617-1, Human MNT Recombinant Matched Antibody Pair - PBS only. 83648-1-PBS was coated to a plate as the capture antibody and incubated with serial dilutions of standard Ag34529. 83648-3-PBS was HRP conjugated as the detection antibody. Range: 0.156-10 ng/mL



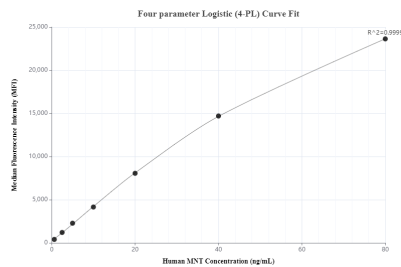
The mean MNT concentration was determined to be 19.62 ng/mL in HEK-293T cell extract based on a 5.50 mg/mL extract load and 17.06 ng/mL in HeLa cell extract based on a 3.60 mg/mL extract load.



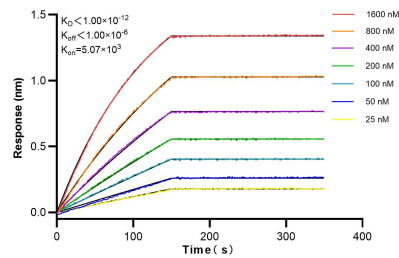
1×10^6 A431 cells were intracellularly stained with 0.25 ug MNT Recombinant antibody (83648-1-RR, Clone:240550A10) and APC-Conjugated AffiniPure Goat Anti-Rabbit IgG(H+L)(red), or 0.25 ug Isotype Control (blue). Cells were fixed and permeabilized with True-Nuclear Transcription Factor Buffer Set. This data was developed using the same antibody clone with 83648-1-PBS in a different storage buffer formulation.



Cytometric bead array standard curve of MP00617-2, MNT Recombinant Matched Antibody Pair, PBS Only. Capture antibody: 83648-1-PBS. Detection antibody: 83648-4-PBS. Standard: Ag34529. Range: 0.625-80 ng/mL



Cytometric bead array standard curve of MP00617-3, MNT Recombinant Matched Antibody Pair, PBS Only. Capture antibody: 83648-1-PBS. Detection antibody: 83648-2-PBS. Standard: Ag34529. Range: 0.625-80 ng/mL



Biolayer interferometry (BLI) kinetic assays of 83648-1-RR against Human MNT were performed. The affinity constant is below 1 pM.