

For Research Use Only

DLAT Recombinant antibody, PBS Only (Detector)



Catalog Number: 83654-2-PBS

Basic Information

| | | |
|---|---|---|
| Catalog Number: 83654-2-PBS | GenBank Accession Number: BC039084 | Purification Method: Protein A purification |
| Size: 1 mg/ml | GeneID (NCBI): 1737 | CloneNo.: 240713D9 |
| Source: Rabbit | UNIPROT ID: P10515 | |
| Isotype: IgG | Full Name: dihydrolipoamide S-acetyltransferase | |
| Immunogen Catalog Number: AG22831 | Calculated MW: 647 aa, 70 kDa | |

Applications

Tested Applications:
Indirect ELISA, Cytometric bead array

Species Specificity:
Human

Background Information

Storage

Storage:
Store at -80°C.

Storage Buffer:
PBS Only

For technical support and original validation data for this product please contact:

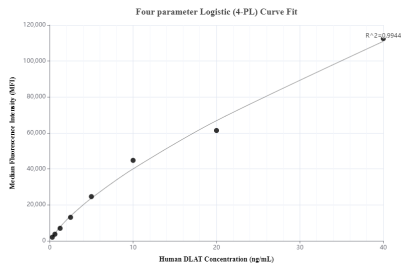
T: 4006900926

E: Proteintech-CN@ptglab.com

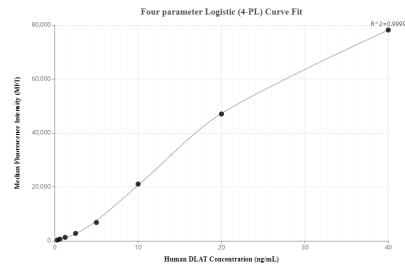
W: ptgcn.com

This product is exclusively available under Proteintech Group brand and is not available to purchase from any other manufacturer.

Selected Validation Data



Cytometric bead array standard curve of MP00635-1, DLAT Recombinant Matched Antibody Pair, PBS Only. Capture antibody: 83654-1-PBS. Detection antibody: 83654-2-PBS. Standard: Ag22831. Range: 0.313-40 ng/mL



Cytometric bead array standard curve of MP00635-3, DLAT Recombinant Matched Antibody Pair, PBS Only. Capture antibody: 83654-3-PBS. Detection antibody: 83654-2-PBS. Standard: Ag22831. Range: 0.313-40 ng/mL