

For Research Use Only

TMEM59 Recombinant antibody

Catalog Number: 83656-3-RR



Basic Information

Catalog Number: 83656-3-RR	GenBank Accession Number: BC016374	Purification Method: Protein A purification
Size: 1000 µg/ml	GeneID (NCBI): 9528	CloneNo.: 240457A1
Source: Rabbit	UNIPROT ID: Q9BXS4	Recommended Dilutions: IF/ICC 1:125-1:500
Isotype: IgG	Full Name: transmembrane protein 59	
Immunogen Catalog Number: AG1968	Calculated MW: 36 kDa	

Applications

Tested Applications: IF/ICC, FC (Intra), ELISA	Positive Controls: IF/ICC : HepG2 cells,
Species Specificity: human	

Background Information

TMEM59 is a regulator of autophagy in response to bacterial infection. Overexpression of this protein has been found to promote apoptosis in a glioma cell line. Alternative splicing of TMEM59 results in multiple transcript variants.

Storage

Storage:
Store at -20°C. Stable for one year after shipment.
Storage Buffer:
PBS with 0.02% sodium azide and 50% glycerol pH 7.3.
Aliquoting is unnecessary for -20°C storage

For technical support and original validation data for this product please contact:

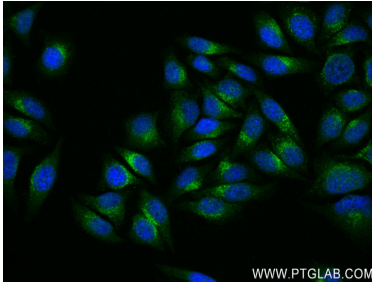
T: 4006900926

E: Proteintech-CN@ptglab.com

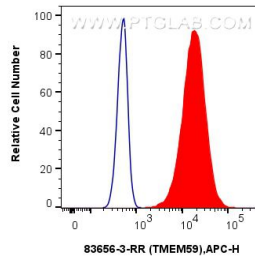
W: ptgcn.com

This product is exclusively available under Proteintech Group brand and is not available to purchase from any other manufacturer.

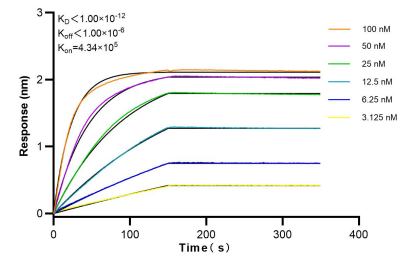
Selected Validation Data



Immunofluorescent analysis of (-20°C Ethanol) fixed HepG2 cells using TMEM59 antibody (83656-3-RR, Clone: 240457A1) at dilution of 1:250 and CoraLite®488-Conjugated AffiniPure Goat Anti-Rabbit IgG(H+L) (SA00013-2).



1x10⁶ HepG2 cells were intracellularly stained with 0.25 µg TMEM59 Recombinant antibody (83656-3-RR, Clone:240457A1) and APC-Conjugated AffiniPure Goat Anti-Rabbit IgG(H+L) (red), or 0.25 µg Isotype Control (blue). Cells were fixed with 4% PFA and permeabilized with Flow Cytometry Perm Buffer (PF00011-C).



Bi-layer interferometry (BLI) kinetic assays of 83656-3-RR against Human TMEM59 were performed. The affinity constant is below 1 pM.