

For Research Use Only

# RNF216 Recombinant antibody, PBS Only (Capture)

Catalog Number:83658-2-PBS



## Basic Information

<b>Catalog Number:</b> 83658-2-PBS	<b>GenBank Accession Number:</b> BC000787	<b>Purification Method:</b> Protein A purification
<b>Size:</b> 1 mg/ml	<b>GeneID (NCBI):</b> 54476	<b>CloneNo.:</b> 240489G2
<b>Source:</b> Rabbit	<b>UNIPROT ID:</b> Q9NWF9	
<b>Isotype:</b> IgG	<b>Full Name:</b> ring finger protein 216	
<b>Immunogen Catalog Number:</b> AG0238	<b>Calculated MW:</b> 48 kDa	
	<b>Observed MW:</b> ~130 kDa	

## Applications

**Tested Applications:**  
WB, FC (Intra), IP, Cytometric bead array, Indirect ELISA

**Species Specificity:**  
human

## Background Information

RNF216/TRIAD3 is an RBR (RING-between-RING) E3 ligase that encodes for multiple isoforms that include TRIAD3A, TRIAD3B, TRIAD3C and TRIAD3D/E. RNF216 is a broadly expressed RBR E3 ligase, and loss-of-function mutations in RNF216 are linked to the neurodegenerative conditions Gordon-Holmes syndrome (GHS) and Huntington-like disorders (PMID: 34998453, 35620441). RNF216 has three different molecular weights, 99 kDa, 106 kDa and 57 kDa, respectively. Western analysis detected the ~130 kDa band as indicated in literature (PMID: 21270397).

## Storage

**Storage:**  
Store at -80°C.  
**The product is shipped with ice packs. Upon receipt, store it immediately at -80°C**

**Storage Buffer:**  
PBS Only

For technical support and original validation data for this product please contact:

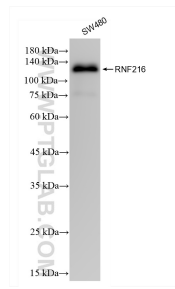
T: 4006900926

E: [Proteintech-CN@ptglab.com](mailto:Proteintech-CN@ptglab.com)

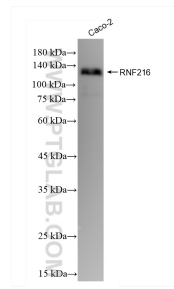
W: [ptgcn.com](http://ptgcn.com)

**This product is exclusively available under Proteintech Group brand and is not available to purchase from any other manufacturer.**

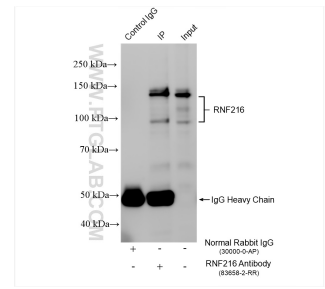
## Selected Validation Data



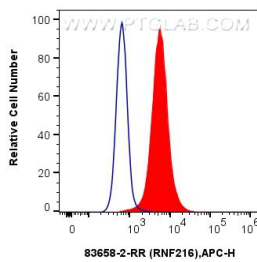
SW480 cells were subjected to SDS PAGE followed by western blot with 83658-2-RR (RNF216 antibody) at dilution of 1:10000 incubated at room temperature for 1.5 hours. This data was developed using the same antibody clone with 83658-2-PBS in a different storage buffer formulation.



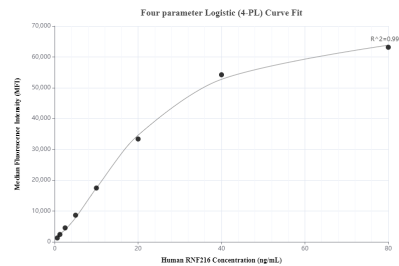
Caco-2 cells were subjected to SDS PAGE followed by western blot with 83658-2-RR (RNF216 antibody) at dilution of 1:10000 incubated at room temperature for 1.5 hours. This data was developed using the same antibody clone with 83658-2-PBS in a different storage buffer formulation.



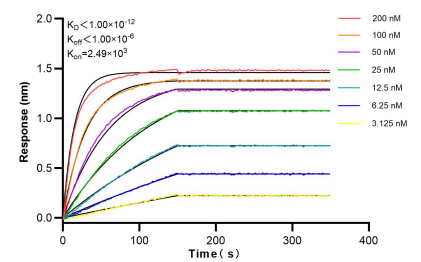
IP result of anti-RNF216 (IP:83658-2-RR, 4ug; Detection:83658-2-RR 1:1000) with SW480 cells lysate 1280 ug. This data was developed using the same antibody clone with 83658-2-PBS in a different storage buffer formulation.



$1 \times 10^6$  A431 cells were intracellularly stained with 0.25 ug RNF216 Recombinant antibody (83658-2-RR, Clone:240489G2) and APC-Conjugated AffiniPure Goat Anti-Rabbit IgG(H+L) (red), or 0.25 ug Isotype Control (blue). Cells were fixed with 4% PFA and permeabilized with Flow Cytometry Perm Buffer (PF00011-C). This data was developed using the same antibody clone with 83658-2-PBS in a different storage buffer formulation.



Cytometric bead array standard curve of MP00643-1, RNF216 Recombinant Matched Antibody Pair, PBS Only. Capture antibody: 83658-2-PBS. Detection antibody: 83658-5-PBS. Standard: Ag0238. Range: 0.625-80 ng/mL.



Biolayer interferometry (BLI) kinetic assays of 83658-2-RR against Human RNF216 were performed. The affinity constant is below 1 pM.