

For Research Use Only

SOX4 Recombinant antibody, PBS Only (Capture)

Catalog Number: 83660-1-PBS



Basic Information

Catalog Number: 83660-1-PBS	GenBank Accession Number: BC072668	Purification Method: Protein A purification
Size: 1 mg/ml	GeneID (NCBI): 6659	CloneNo.: 240625E3
Source: Rabbit	UNIPROT ID: Q06945	
Isotype: IgG	Full Name: SRY (sex determining region Y)-box 4	
Immunogen Catalog Number: AG26583	Calculated MW: 474 aa, 47 kDa	

Applications

Tested Applications:
WB, FC (Intra), Cytometric bead array, Sandwich ELISA,
Indirect ELISA, Sample test

Species Specificity:
human

Background Information

Storage

Storage:
Store at -80°C.
The product is shipped with ice packs. Upon receipt, store it immediately at -80°C

Storage Buffer:
PBS Only

For technical support and original validation data for this product please contact:

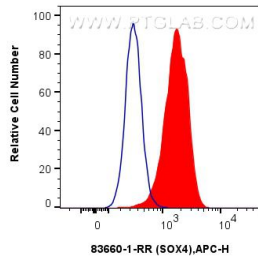
T: 4006900926

E: Proteintech-CN@ptglab.com

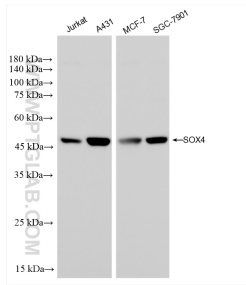
W: ptgcn.com

This product is exclusively available under Proteintech Group brand and is not available to purchase from any other manufacturer.

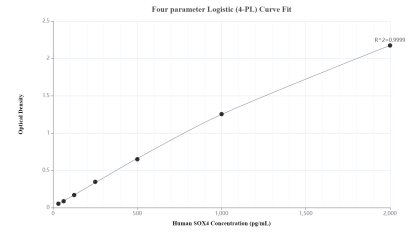
Selected Validation Data



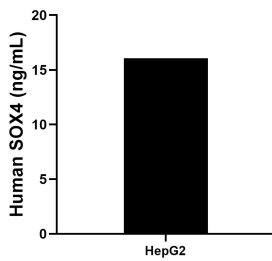
1x10⁶ SH-SY5Y cells were intracellularly stained with 0.25 ug SOX4 Recombinant antibody (83660-1-RR, Clone:240625E3) and APC-Conjugated AffiniPure Goat Anti-Rabbit IgG(H+L)(red), or 0.25 ug Isotype Control (blue). Cells were fixed and permeabilized with True-Nuclear Transcription Factor Buffer Set. This data was developed using the same antibody clone with 83660-1-PBS in a different storage buffer formulation.



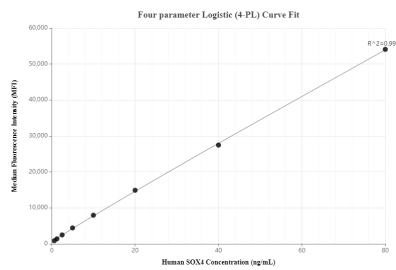
Various lysates were subjected to SDS PAGE followed by western blot with 83660-1-RR (SOX4 antibody) at dilution of 1:5000 incubated at room temperature for 1.5 hours. This data was developed using the same antibody clone with 83660-1-PBS in a different storage buffer formulation.



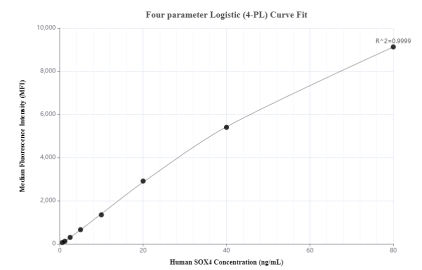
Sandwich ELISA standard curve of MP00619-1, Human SOX4 Recombinant Matched Antibody Pair - PBS only. 83660-1-PBS was coated to a plate as the capture antibody and incubated with serial dilutions of standard Ag26583. 83660-3-PBS was HRP conjugated as the detection antibody. Range: 31.3-2000 pg/mL.



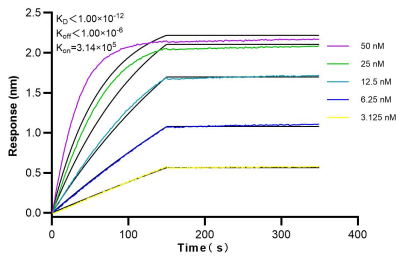
The mean SOX4 concentration was determined to be 16.1 ng/mL in HepG2 cell extract based on a 1.2 mg/mL extract load.



Cytometric bead array standard curve of MP00619-1, SOX4 Recombinant Matched Antibody Pair, PBS Only. Capture antibody: 83660-1-PBS. Detection antibody: 83660-3-PBS. Standard: Ag26583. Range: 0.625-80 ng/mL.



Cytometric bead array standard curve of MP00619-2, SOX4 Recombinant Matched Antibody Pair, PBS Only. Capture antibody: 83660-1-PBS. Detection antibody: 83660-2-PBS. Standard: Ag26583. Range: 0.625-80 ng/mL.



Biolayer interferometry (BLI) kinetic assays of 83660-1-RR against Human SOX4 were performed. The affinity constant is below 1 pM.