

For Research Use Only

SLC30A2 Recombinant antibody, PBS Only

Catalog Number:83666-1-PBS



Basic Information

Catalog Number:

83666-1-PBS

Size:

1 mg/ml

Source:

Rabbit

Isotype:

IgG

Immunogen Catalog Number:

AG8232

GenBank Accession Number:

BC006251

GeneID (NCBI):

7780

UNIPROT ID:

Q9BRI3

Full Name:

solute carrier family 30 (zinc transporter), member 2

Calculated MW:

323 aa, 35 kDa

Purification Method:

Protein A purification

CloneNo.:

240405E3

Applications

Tested Applications:

WB, FC (Intra), ELISA

Species Specificity:

human

Background Information

Storage

Storage:

Store at -80°C.

The product is shipped with ice packs. Upon receipt, store it immediately at -80°C

Storage Buffer:

PBS Only

For technical support and original validation data for this product please contact:

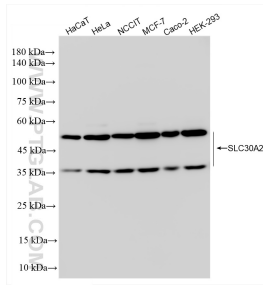
T: 4006900926

E: Proteintech-CN@ptglab.com

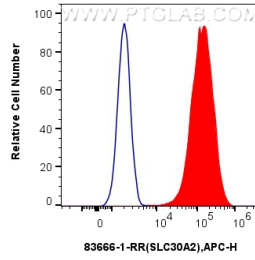
W: ptgcn.com

This product is exclusively available under Proteintech Group brand and is not available to purchase from any other manufacturer.

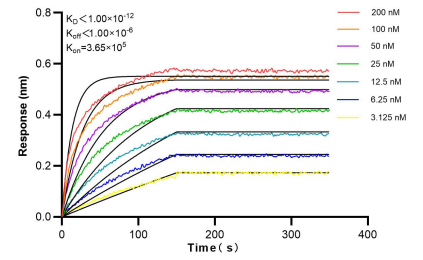
Selected Validation Data



Various lysates were subjected to SDS PAGE followed by western blot with 83666-1-RR (SLC30A2 antibody) at dilution of 1:10000 incubated at room temperature for 1.5 hours. This data was developed using the same antibody clone with 83666-1-PBS in a different storage buffer formulation.



1×10^6 HeLa cells were intracellularly stained with 0.25 ug SLC30A2 Recombinant antibody (83666-1-RR, Clone:240405E3) and APC-Conjugated AffiniPure Goat Anti-Rabbit IgG(H+L)(red), or 0.25 ug Isotype Control (blue). Cells were fixed with 4% PFA and permeabilized with Flow Cytometry Perm Buffer (PF00011-C). This data was developed using the same antibody clone with 83666-1-PBS in a different storage buffer formulation.



Biolayer interferometry (BLI) kinetic assays of 83666-1-RR against Human SLC30A2 were performed. The affinity constant is below 1 pM.