

For Research Use Only

PBRM1 Recombinant antibody, PBS Only (Detector)

Catalog Number:83677-1-PBS



Basic Information

| | | |
|--------------------------------------|---------------------------------------|--|
| Catalog Number: 83677-1-PBS | GenBank Accession Number: BC015323 | Purification Method: Protein A purification |
| Size: 1 mg/ml | GeneID (NCBI): 55193 | CloneNo.: 240655C3 |
| Source: Rabbit | UNIPROT ID: Q86U86 | |
| Isotype: IgG | Full Name: polybromo 1 | |
| Immunogen Catalog Number: AG33623 | Calculated MW: 180 kDa | |

Applications

Tested Applications:
Cytometric bead array, Indirect ELISA

Species Specificity:
human

Background Information

Storage

Storage:
Store at -80°C.
The product is shipped with ice packs. Upon receipt, store it immediately at -80°C

Storage Buffer:
PBS Only

For technical support and original validation data for this product please contact:

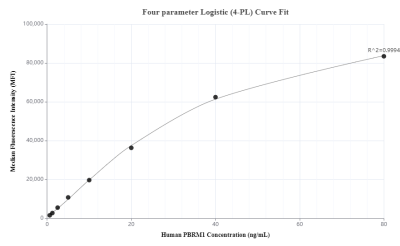
T: 4006900926

E: Proteintech-CN@ptglab.com

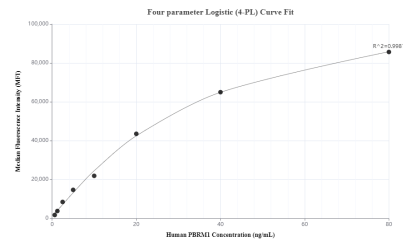
W: ptgcn.com

This product is exclusively available under Proteintech Group brand and is not available to purchase from any other manufacturer.

Selected Validation Data



Cytometric bead array standard curve of MP00656-1, PBRM1 Recombinant Matched Antibody Pair, PBS Only. Capture antibody: 83677-4-PBS. Detection antibody: 83677-1-PBS. Standard: Ag33623. Range: 0.625-80 ng/mL



Cytometric bead array standard curve of MP00656-2, PBRM1 Recombinant Matched Antibody Pair, PBS Only. Capture antibody: 83677-5-PBS. Detection antibody: 83677-1-PBS. Standard: Ag33623. Range: 0.625-80 ng/mL