

For Research Use Only

# PBRM1 Recombinant antibody, PBS Only (Capture)

Catalog Number:83677-2-PBS



## Basic Information

Catalog Number: 83677-2-PBS	GenBank Accession Number: BC015323	Purification Method: Protein A purification
Size: 1 mg/ml	GeneID (NCBI): 55193	CloneNo.: 240655H5
Source: Rabbit	UNIPROT ID: Q86U86	
Isotype: IgG	Full Name: polybromo 1	
Immunogen Catalog Number: AG33623	Calculated MW: 180 kDa	

## Applications

**Tested Applications:**  
WB, Cytometric bead array, Indirect ELISA

**Species Specificity:**  
human, mouse

## Background Information

### Storage

**Storage:**  
Store at -80°C.  
**The product is shipped with ice packs. Upon receipt, store it immediately at -80°C**

**Storage Buffer:**  
PBS Only

For technical support and original validation data for this product please contact:

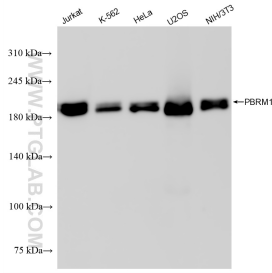
T: 4006900926

E: [Proteintech-CN@ptglab.com](mailto:Proteintech-CN@ptglab.com)

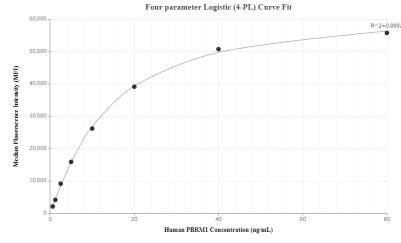
W: [ptgcn.com](http://ptgcn.com)

**This product is exclusively available under Proteintech Group brand and is not available to purchase from any other manufacturer.**

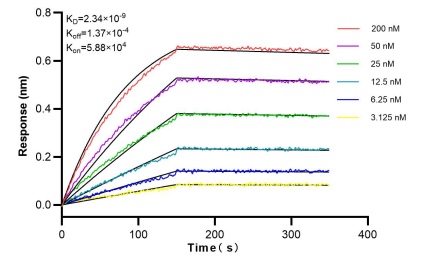
## Selected Validation Data



Various lysates were subjected to SDS PAGE followed by western blot with 83677-2-RR (PBRM1 antibody) at dilution of 1:5000 incubated at room temperature for 1.5 hours. This data was developed using the same antibody clone with 83677-2-PBS in a different storage buffer formulation.



Cytometric bead array standard curve of MP00656-3, PBRM1 Recombinant Matched Antibody Pair, PBS Only. Capture antibody: 83677-2-PBS. Detection antibody: 83677-3-PBS. Standard: Ag33623. Range: 0.625-80 ng/mL.



Biolayer interferometry (BLI) kinetic assays of 83677-2-RR against Human PBRM1 were performed. The affinity constant is 2.34 nM.