

For Research Use Only

PBRM1 Recombinant antibody, PBS Only (Detector)

Catalog Number:83677-3-PBS



Basic Information

Catalog Number: 83677-3-PBS	GenBank Accession Number: BC015323	Purification Method: Protein A purification
Size: 1 mg/ml	GeneID (NCBI): 55193	CloneNo.: 240655F6
Source: Rabbit	UNIPROT ID: Q86U86	
Isotype: IgG	Full Name: polybromo 1	
Immunogen Catalog Number: AG33623	Calculated MW: 180 kDa	

Applications

Tested Applications:
Cytometric bead array, Sandwich ELISA, Indirect ELISA,
Sample test

Species Specificity:
human

Background Information

Storage

Storage:
Store at -80°C.
The product is shipped with ice packs. Upon receipt, store it immediately at -80°C

Storage Buffer:
PBS Only

For technical support and original validation data for this product please contact:

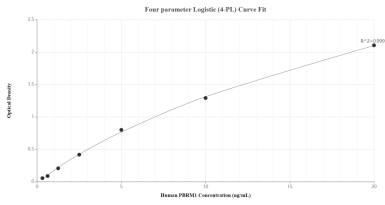
T: 4006900926

E: Proteintech-CN@ptglab.com

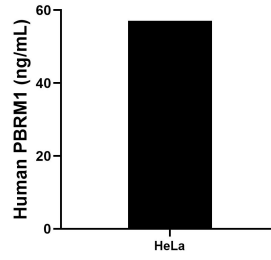
W: ptgcn.com

This product is exclusively available under Proteintech Group brand and is not available to purchase from any other manufacturer.

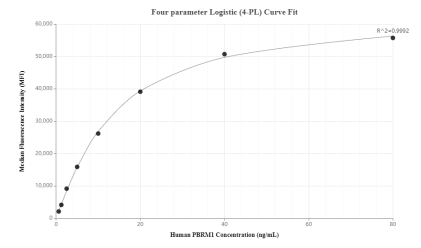
Selected Validation Data



Sandwich ELISA standard curve of MP00656-4, Human PBRM1 Recombinant Matched Antibody Pair - PBS only. 83677-6-PBS was coated to a plate as the capture antibody and incubated with serial dilutions of standard Ag33623. 83677-3-PBS was HRP conjugated as the detection antibody. Range: 0.312-20 ng/mL.



The mean PBRM1 concentration was determined to be 57.09 ng/mL in HeLa cell extract based on a 2.00 mg/mL extract load.



Cytometric bead array standard curve of MP00656-3, PBRM1 Recombinant Matched Antibody Pair, PBS Only. Capture antibody: 83677-2-PBS. Detection antibody: 83677-3-PBS. Standard: Ag33623. Range: 0.625-80 ng/mL.